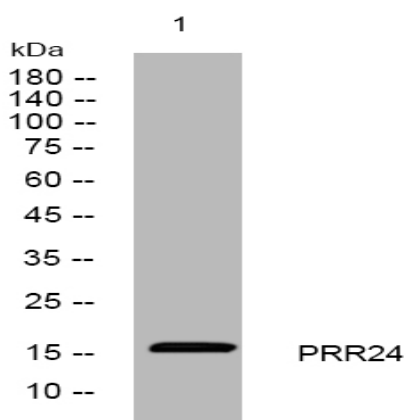


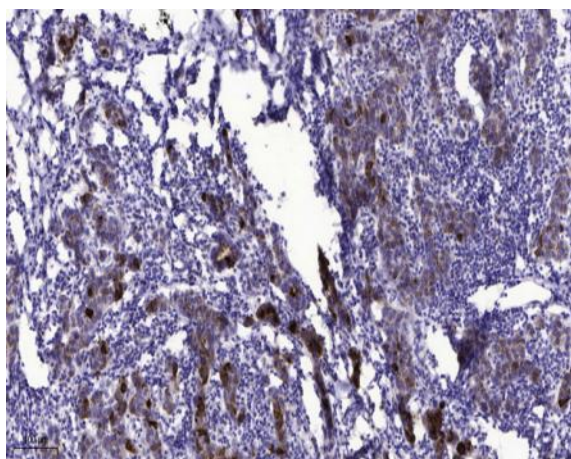
## PRR24 rabbit pAb

<b>Catalog No :</b>	YT6908
<b>Reactivity :</b>	Human
<b>Applications :</b>	WB;IF;ELISA;IHC
<b>Target :</b>	PRR24
<b>Gene Name :</b>	PRR24
<b>Protein Name :</b>	PRR24
<b>Human Gene Id :</b>	255783
<b>Human Swiss Prot No :</b>	C9JVV0
<b>Immunogen :</b>	Synthesized peptide derived from human PRR24 AA range: 92-142
<b>Specificity :</b>	This antibody detects endogenous levels of PRR24 at Human
<b>Formulation :</b>	Liquid in PBS containing 50% glycerol, 0.5% BSA and 0.02% sodium azide.
<b>Source :</b>	Polyclonal, Rabbit,IgG
<b>Dilution :</b>	WB 1:500-2000; IF ICC 1:50-200;ELISA 1:2000-20000;IHC 1:50-200
<b>Purification :</b>	The antibody was affinity-purified from rabbit antiserum by affinity-chromatography using epitope-specific immunogen.
<b>Concentration :</b>	1 mg/ml
<b>Storage Stability :</b>	-15°C to -25°C/1 year(Do not lower than -25°C)
<b>Molecularweight :</b>	16kD
<b>Subcellular Location :</b>	Membrane ; Single-pass membrane protein .

## Products Images



Western blot analysis of lysates from SW480 cells, primary antibody was diluted at 1:1000, 4° over night



Immunohistochemical analysis of paraffin-embedded human Breast cancer. 1, Antibody was diluted at 1:200(4° overnight). 2, Tris-EDTA,pH9.0 was used for antigen retrieval. 3,Secondary antibody was diluted at 1:200(room temperature, 45min).