

## ANO2 rabbit pAb

<b>Catalog No :</b>	YT6907
<b>Reactivity :</b>	Human;Mouse
<b>Applications :</b>	WB
<b>Target :</b>	ANO2
<b>Fields :</b>	>>Olfactory transduction
<b>Gene Name :</b>	ANO2 C12orf3 TMEM16B
<b>Protein Name :</b>	ANO2
<b>Human Gene Id :</b>	57101
<b>Human Swiss Prot No :</b>	Q9NQ90
<b>Mouse Gene Id :</b>	243634
<b>Mouse Swiss Prot No :</b>	Q8CFW1
<b>Immunogen :</b>	Synthesized peptide derived from human ANO2 AA range: 362-412
<b>Specificity :</b>	This antibody detects endogenous levels of ANO2 at Human/Mouse
<b>Formulation :</b>	Liquid in PBS containing 50% glycerol, 0.5% BSA and 0.02% sodium azide.
<b>Source :</b>	Polyclonal, Rabbit,IgG
<b>Dilution :</b>	WB 1[?]500-2000
<b>Purification :</b>	The antibody was affinity-purified from rabbit antiserum by affinity-chromatography using epitope-specific immunogen.
<b>Concentration :</b>	1 mg/ml

**Storage Stability :** -15°C to -25°C/1 year(Do not lower than -25°C)

**Molecularweight :** 110kD

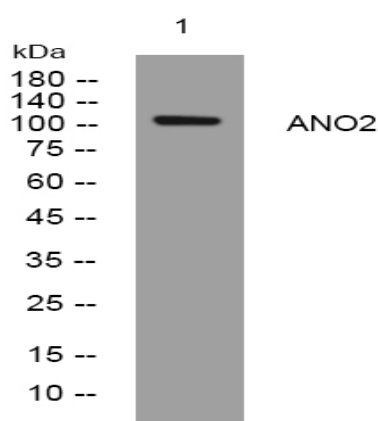
**Background :** ANO2 belongs to a family of calcium-activated chloride channels (CaCCs) (reviewed by Hartzell et al., 2009 [PubMed 19015192]).[supplied by OMIM, Jan 2011],

**Function :** function:May act as a calcium-activated chloride channel.,similarity:Belongs to the anoctamin family.,

**Subcellular Location :** Cell membrane ; Multi-pass membrane protein .

**Expression :** Retina, especially in the photoreceptor synaptic terminals.

## Products Images



Western blot analysis of lysates from KB cells, primary antibody was diluted at 1:1000, 4° over night