

NKD2 rabbit pAb

Catalog No :	YT6904
Reactivity :	Human;Mouse
Applications :	WB
Target :	NKD2
Fields :	>>Wnt signaling pathway;>>Hippo signaling pathway
Gene Name :	NKD2
Protein Name :	NKD2
Human Gene Id :	85409
Human Swiss Prot No :	Q969F2
Mouse Gene Id :	72293
Mouse Swiss Prot No :	Q8VE28
Immunogen :	Synthesized peptide derived from human NKD2 AA range: 311-361
Specificity :	This antibody detects endogenous levels of NKD2 at Human/Mouse
Formulation :	Liquid in PBS containing 50% glycerol, 0.5% BSA and 0.02% sodium azide.
Source :	Polyclonal, Rabbit,IgG
Dilution :	WB 1[?]500-2000
Purification :	The antibody was affinity-purified from rabbit antiserum by affinity-chromatography using epitope-specific immunogen.
Concentration :	1 mg/ml

Storage Stability : -15°C to -25°C/1 year(Do not lower than -25°C)

Molecularweight : 50kD

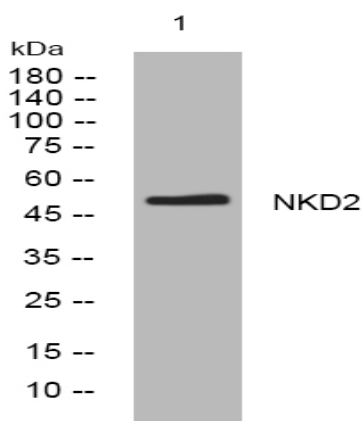
Background : This gene encodes a member of a family of proteins that function as negative regulators of Wnt receptor signaling through interaction with Dishevelled family members. The encoded protein participates in the delivery of transforming growth factor alpha-containing vesicles to the cell membrane. Alternatively spliced transcript variants encoding multiple isoforms have been observed for this gene. [provided by RefSeq, Aug 2012],

Function : developmental stage:Expressed in fetal kidney and lung.,function:Cell autonomous antagonist of the canonical Wnt signaling pathway. May activate a second Wnt signaling pathway that controls planar cell polarity (By similarity). Required for processing of TGFA and for targeting of TGFA to the basolateral membrane of polarized epithelial cells.,similarity:Belongs to the NKD family.,similarity:Contains 1 EF-hand domain.,subunit:Interacts with DVL1, DVL2, DVL3 and PPP2R3A (By similarity). Interacts with TGFA.,tissue specificity:Expressed in kidney, lung, pancreas and spleen.,

Subcellular Location : Cell membrane . Cytoplasm . Cytoplasmic vesicle .

Expression : Expressed in kidney, lung, pancreas and spleen.

Products Images



Western blot analysis of lysates from SW480 cells, primary antibody was diluted at 1:1000, 4° over night