

CLMN rabbit pAb

Catalog No :	YT6898
Reactivity :	Human;Mouse
Applications :	WB
Target :	CLMN
Gene Name :	CLMN KIAA1188
Protein Name :	CLMN
Human Gene Id :	79789
Human Swiss Prot No :	Q96JQ2
Mouse Gene Id :	94040
Mouse Swiss Prot No :	Q8C5W0
Immunogen :	Synthesized peptide derived from human CLMN AA range: 693-743
Specificity :	This antibody detects endogenous levels of CLMN at Human/Mouse
Formulation :	Liquid in PBS containing 50% glycerol, 0.5% BSA and 0.02% sodium azide.
Source :	Polyclonal, Rabbit,IgG
Dilution :	WB 1[?]500-2000
Purification :	The antibody was affinity-purified from rabbit antiserum by affinity-chromatography using epitope-specific immunogen.
Concentration :	1 mg/ml
Storage Stability :	-15°C to -25°C/1 year(Do not lower than -25°C)

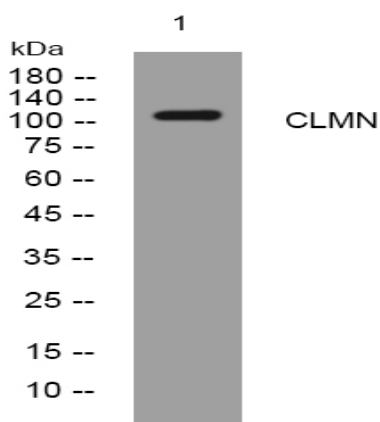
Molecularweight : 110kD

Function : sequence caution:Chimeric cDNA.,similarity:Contains 1 actin-binding domain.,similarity:Contains 2 CH (calponin-homology) domains.,tissue specificity:Widely expressed at intermediate level.,

Subcellular Location : Membrane ; Single-pass type IV membrane protein .

Expression : Widely expressed at intermediate level.

Products Images



Western blot analysis of lysates from 293T cells, primary antibody was diluted at 1:1000, 4° over night