

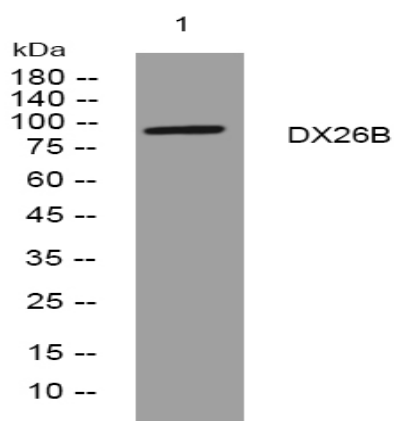
DX26B rabbit pAb

Catalog No :	YT6893
Reactivity :	Human;Mouse
Applications :	WB
Target :	DX26B
Gene Name :	DDX26B
Protein Name :	DX26B
Human Gene Id :	203522
Human Swiss Prot No :	Q5JSJ4
Mouse Gene Id :	236790
Mouse Swiss Prot No :	Q8BND4
Immunogen :	Synthesized peptide derived from human DX26B AA range: 166-216
Specificity :	This antibody detects endogenous levels of DX26B at Human/Mouse
Formulation :	Liquid in PBS containing 50% glycerol, 0.5% BSA and 0.02% sodium azide.
Source :	Polyclonal, Rabbit,IgG
Dilution :	WB 1:500-2000
Purification :	The antibody was affinity-purified from rabbit antiserum by affinity-chromatography using epitope-specific immunogen.
Concentration :	1 mg/ml
Storage Stability :	-15°C to -25°C/1 year(Do not lower than -25°C)

Molecularweight : 95kD

Function : similarity:Contains 1 VWFA domain.,

Products Images



Western blot analysis of lysates from MDA-MB cells, primary antibody was diluted at 1:1000, 4° over night