

## TMCC1 rabbit pAb

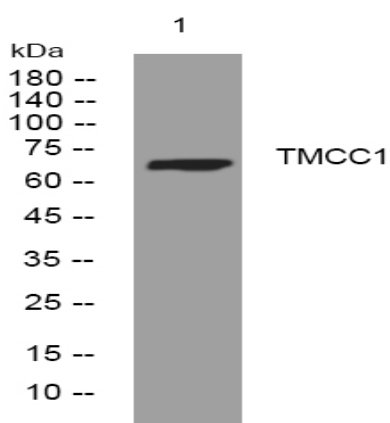
<b>Catalog No :</b>	YT6892
<b>Reactivity :</b>	Human;Mouse
<b>Applications :</b>	WB
<b>Target :</b>	TMCC1
<b>Gene Name :</b>	TMCC1 KIAA0779
<b>Protein Name :</b>	TMCC1
<b>Human Gene Id :</b>	23023
<b>Human Swiss Prot No :</b>	O94876
<b>Mouse Gene Id :</b>	330401
<b>Mouse Swiss Prot No :</b>	Q69ZZ6
<b>Immunogen :</b>	Synthesized peptide derived from human TMCC1 AA range: 275-325
<b>Specificity :</b>	This antibody detects endogenous levels of TMCC1 at Human/Mouse
<b>Formulation :</b>	Liquid in PBS containing 50% glycerol, 0.5% BSA and 0.02% sodium azide.
<b>Source :</b>	Polyclonal, Rabbit,IgG
<b>Dilution :</b>	WB 1:500-2000
<b>Purification :</b>	The antibody was affinity-purified from rabbit antiserum by affinity-chromatography using epitope-specific immunogen.
<b>Concentration :</b>	1 mg/ml
<b>Storage Stability :</b>	-15°C to -25°C/1 year(Do not lower than -25°C)

**Molecularweight :** 72kD

**Function :** similarity:Belongs to the TEX28 family.,

**Subcellular Location :** Endoplasmic reticulum membrane ; Multi-pass membrane protein . Specifically localizes to contact sites between the endoplasmic reticulum and endosomes that are spatially and temporally linked to endosome fission. .

## Products Images



Western blot analysis of lysates from KB cells, primary antibody was diluted at 1:1000, 4 ° over night