

## IFT27 rabbit pAb

<b>Catalog No :</b>	YT6891
<b>Reactivity :</b>	Human;Mouse
<b>Applications :</b>	WB
<b>Target :</b>	IFT27
<b>Gene Name :</b>	IFT27 RABL4 RAYL
<b>Protein Name :</b>	IFT27
<b>Human Gene Id :</b>	11020
<b>Human Swiss Prot No :</b>	Q9BW83
<b>Mouse Gene Id :</b>	67042
<b>Mouse Swiss Prot No :</b>	Q9D0P8
<b>Immunogen :</b>	Synthesized peptide derived from human IFT27 AA range: 8-58
<b>Specificity :</b>	This antibody detects endogenous levels of IFT27 at Human/Mouse
<b>Formulation :</b>	Liquid in PBS containing 50% glycerol, 0.5% BSA and 0.02% sodium azide.
<b>Source :</b>	Polyclonal, Rabbit,IgG
<b>Dilution :</b>	WB 1:500-2000
<b>Purification :</b>	The antibody was affinity-purified from rabbit antiserum by affinity-chromatography using epitope-specific immunogen.
<b>Concentration :</b>	1 mg/ml
<b>Storage Stability :</b>	-15°C to -25°C/1 year(Do not lower than -25°C)

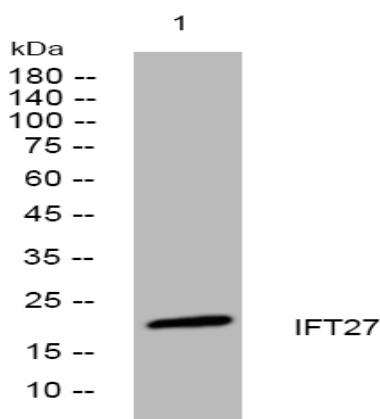
**Molecularweight :** 20kD

**Background :** This gene encodes a GTP-binding protein that is a core component of the intraflagellar transport complex B. Characterization of the similar Chlamydomonas protein indicates a function in cell cycle control. Alternative splicing of this gene results in multiple transcript variants. [provided by RefSeq, Jan 2012],

**Function :** function:Possesses GTPase activity.,similarity:Belongs to the small GTPase superfamily. Ras family.,

**Subcellular Location :** Cell projection, cilium . Cytoplasm . Cell projection, cilium, flagellum . Localizes to the sperm flagellum. .

## Products Images



Western blot analysis of lysates from 293T cells, primary antibody was diluted at 1:1000, 4° over night