

T2FA rabbit pAb

Catalog No :	YT6890
Reactivity :	Human;Mouse;Rat
Applications :	WB
Target :	T2FA
Fields :	>>Basal transcription factors
Gene Name :	GTF2F1 RAP74
Protein Name :	T2FA
Human Gene Id :	2962
Human Swiss Prot No :	P35269
Mouse Gene Id :	98053
Mouse Swiss Prot No :	Q3THK3
Rat Gene Id :	316123
Rat Swiss Prot No :	Q6AY96
Immunogen :	Synthesized peptide derived from human T2FA AA range: 462-512
Specificity :	This antibody detects endogenous levels of T2FA at Human/Mouse/Rat
Formulation :	Liquid in PBS containing 50% glycerol, 0.5% BSA and 0.02% sodium azide.
Source :	Polyclonal, Rabbit,IgG
Dilution :	WB 1[?]500-2000
Purification :	The antibody was affinity-purified from rabbit antiserum by affinity-

chromatography using epitope-specific immunogen.

Concentration : 1 mg/ml

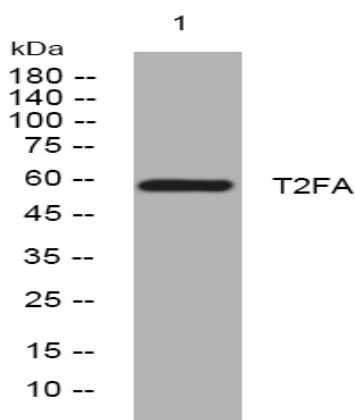
Storage Stability : -15°C to -25°C/1 year(Do not lower than -25°C)

Molecularweight : 57kD

Function : caution:Was reported (PubMed:10428810) to have a protein kinase activity and to autophosphorylates on Ser-385 and Thr-389.,function:TFIIF is a general transcription initiation factor that binds to RNA polymerase II and helps to recruit it to the initiation complex in collaboration with TFIIB. It promotes transcription elongation.,PTM:Phosphorylated on Ser and other residues by TAF1 and casein kinase II-like kinases.,similarity:Belongs to the TFIIF alpha subunit family.,subunit:Heterodimer of an alpha and a beta subunit. Interacts with GTF2F2 and CTDP1. Interacts with TAF6/TAFII80.,

Subcellular Location : Nucleus.

Products Images



Western blot analysis of lysates from HpeG2 cells, primary antibody was diluted at 1:1000, 4° over night