

## TRM6 rabbit pAb

<b>Catalog No :</b>	YT6887
<b>Reactivity :</b>	Human;Mouse
<b>Applications :</b>	WB
<b>Target :</b>	TRM6
<b>Gene Name :</b>	TRMT6 KIAA1153 TRM6 CGI-09
<b>Protein Name :</b>	TRM6
<b>Human Gene Id :</b>	51605
<b>Human Swiss Prot No :</b>	Q9UJA5
<b>Mouse Gene Id :</b>	66926
<b>Mouse Swiss Prot No :</b>	Q8CE96
<b>Immunogen :</b>	Synthesized peptide derived from human TRM6 AA range: 175-225
<b>Specificity :</b>	This antibody detects endogenous levels of TRM6 at Human/Mouse
<b>Formulation :</b>	Liquid in PBS containing 50% glycerol, 0.5% BSA and 0.02% sodium azide.
<b>Source :</b>	Polyclonal, Rabbit,IgG
<b>Dilution :</b>	WB 1[?]500-2000
<b>Purification :</b>	The antibody was affinity-purified from rabbit antiserum by affinity-chromatography using epitope-specific immunogen.
<b>Concentration :</b>	1 mg/ml
<b>Storage Stability :</b>	-15°C to -25°C/1 year(Do not lower than -25°C)

**Molecularweight :** 55kD

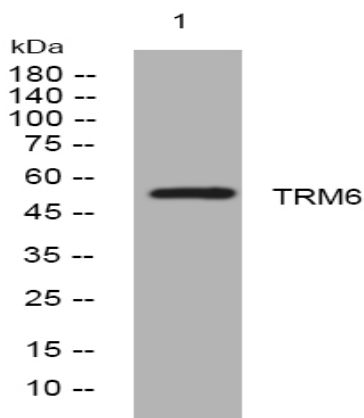
**Background :** This gene encodes a member of the tRNA methyltransferase 6 protein family. A similar protein in yeast is part of a two component methyltransferase, which is involved in the posttranslational modification that produces the modified nucleoside 1-methyladenosine in tRNAs. Modified 1-methyladenosine influences initiator methionine stability and may be involved in the replication of human immunodeficiency virus type 1. Alternative splicing results in multiple transcript variants. [provided by RefSeq, Jul 2013],

**Function :** function:Substrate-binding subunit of tRNA (adenine-N(1)-)-methyltransferase, which catalyzes the formation of N(1)-methyladenine at position 58 (m1A58) in initiator methionyl-tRNA.,PTM:Phosphorylated upon DNA damage, probably by ATM or ATR.,similarity:Belongs to the TRM6/GCD10 family.,subunit:tRNA (adenine-N(1)-)-methyltransferase is a heterodimer of trm6 and trm61.,tissue specificity:Expressed in brain, liver, testis and ovary.,

**Subcellular Location :** Nucleus .

**Expression :** Expressed in brain, liver, testis and ovary.

## Products Images



Western blot analysis of lysates from MCF-7 cells, primary antibody was diluted at 1:1000, 4° over night