

TRML4 rabbit pAb

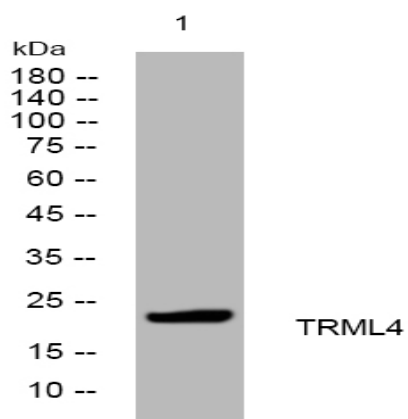
Catalog No :	YT6885
Reactivity :	Human;Mouse
Applications :	WB
Target :	TRML4
Gene Name :	TREML4 TLT4 UNQ9425/PRO34675
Protein Name :	TRML4
Human Gene Id :	285852
Human Swiss Prot No :	Q6UXN2
Mouse Gene Id :	224840
Mouse Swiss Prot No :	Q3LRV9
Immunogen :	Synthesized peptide derived from human TRML4 AA range: 140-190
Specificity :	This antibody detects endogenous levels of TRML4 at Human/Mouse
Formulation :	Liquid in PBS containing 50% glycerol, 0.5% BSA and 0.02% sodium azide.
Source :	Polyclonal, Rabbit,IgG
Dilution :	WB 1[?]500-2000
Purification :	The antibody was affinity-purified from rabbit antiserum by affinity-chromatography using epitope-specific immunogen.
Concentration :	1 mg/ml
Storage Stability :	-15°C to -25°C/1 year(Do not lower than -25°C)

Molecularweight : 22kD

Function : similarity:Contains 1 Ig-like V-type (immunoglobulin-like) domain.,

Subcellular Location : Secreted .

Products Images



Western blot analysis of lysates from HCT116 cells, primary antibody was diluted at 1:1000, 4° over night