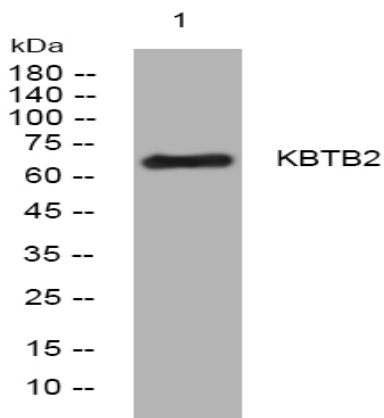


KBTB2 rabbit pAb

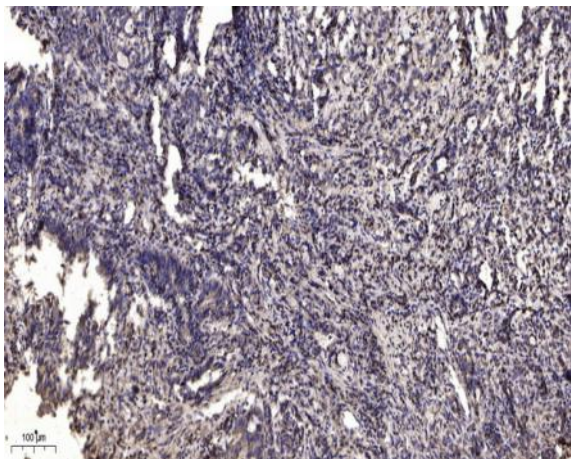
Catalog No :	YT6881
Reactivity :	Human;Mouse
Applications :	WB;IHC
Target :	KBTB2
Gene Name :	KBTBD2 BKLHD1 KIAA1489 CGI-73
Protein Name :	KBTB2
Human Gene Id :	25948
Human Swiss Prot No :	Q8IY47
Immunogen :	Synthesized peptide derived from human KBTB2 AA range: 359-409
Specificity :	This antibody detects endogenous levels of KBTB2 at Human
Formulation :	Liquid in PBS containing 50% glycerol, 0.5% BSA and 0.02% sodium azide.
Source :	Polyclonal, Rabbit,IgG
Dilution :	WB 1:500-2000;IHC 1:50-300
Purification :	The antibody was affinity-purified from rabbit antiserum by affinity-chromatography using epitope-specific immunogen.
Concentration :	1 mg/ml
Storage Stability :	-15°C to -25°C/1 year(Do not lower than -25°C)
Molecularweight :	69kD
Function :	similarity:Contains 1 BTB (POZ) domain.,similarity:Contains 5 Kelch repeats.,

**Subcellular
Location :**

Cul3-RING ubiquitin ligase complex,

Products Images

Western blot analysis of lysates from HEK293 cells, primary antibody was diluted at 1:1000, 4° over night



Immunohistochemical analysis of paraffin-embedded human Gastric adenocarcinoma. 1, Antibody was diluted at 1:200(4° overnight). 2, Tris-EDTA,pH9.0 was used for antigen retrieval. 3,Secondary antibody was diluted at 1:200(room temperature, 45min).