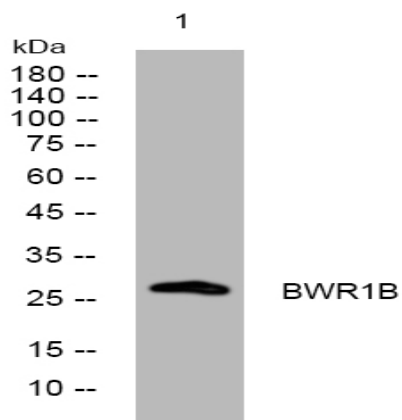


BWR1B rabbit pAb

Catalog No :	YT6880
Reactivity :	Human
Applications :	WB
Target :	BWR1B
Gene Name :	SLC22A18AS BWR1B BWSCR1B ORCTL2S SLC22A1LS
Protein Name :	BWR1B
Human Gene Id :	5003
Human Swiss Prot No :	Q8N1D0
Immunogen :	Synthesized peptide derived from human BWR1B AA range: 44-94
Specificity :	This antibody detects endogenous levels of BWR1B at Human
Formulation :	Liquid in PBS containing 50% glycerol, 0.5% BSA and 0.02% sodium azide.
Source :	Polyclonal, Rabbit,IgG
Dilution :	WB 1[?]500-2000
Purification :	The antibody was affinity-purified from rabbit antiserum by affinity-chromatography using epitope-specific immunogen.
Concentration :	1 mg/ml
Storage Stability :	-15°C to -25°C/1 year(Do not lower than -25°C)
Molecularweight :	28kD
Function :	tissue specificity:Most abundantly expressed in gastrointestinal tissues. Expressed at lower levels in kidney and placenta. Expressed in fetal brain, liver, placenta, kidneys and lung.,

Expression :

Most abundantly expressed in gastrointestinal tissues. Expressed at lower levels in kidney and placenta. Expressed in fetal brain, liver, placenta, kidney and lung.

Products Images

Western blot analysis of lysates from CACO2 cells, primary antibody was diluted at 1:1000, 4° over night