

NOVA2 rabbit pAb

Catalog No :	YT6879
Reactivity :	Human;Mouse
Applications :	WB
Target :	NOVA2
Gene Name :	NOVA2 ANOVA NOVA3
Protein Name :	NOVA2
Human Gene Id :	4858
Human Swiss Prot No :	Q9UNW9
Immunogen :	Synthesized peptide derived from human NOVA2 AA range: 274-324
Specificity :	This antibody detects endogenous levels of NOVA2 at Human
Formulation :	Liquid in PBS containing 50% glycerol, 0.5% BSA and 0.02% sodium azide.
Source :	Polyclonal, Rabbit,IgG
Dilution :	WB 1:500-2000
Purification :	The antibody was affinity-purified from rabbit antiserum by affinity-chromatography using epitope-specific immunogen.
Concentration :	1 mg/ml
Storage Stability :	-15°C to -25°C/1 year(Do not lower than -25°C)
Molecularweight :	54kD
Function :	disease:Autoantigen in the paraneoplastic opsoclonus myoclonus ataxia (POMA), a paraneoplastic neurological syndrome/disorder (PNS/D) associated with breast cancer, fallopian cancer, and SCLCa and characterized primarily by

loss of inhibitory control of motor neurons in the spinal cord and brainstem. Recognized by the IgG autoantibody ANNA-2 (also called anti-Ri).,domain:The third KH domain (KH3) recognizes specifically 5'-UCAY-3'.,function:May regulate RNA splicing or metabolism in a specific subset of developing neurons (By similarity). Binds single strand RNA.,similarity:Contains 3 KH domains.,subunit:Interacts with PTBP2.,tissue specificity:Brain. Expression restricted to astrocytes.,

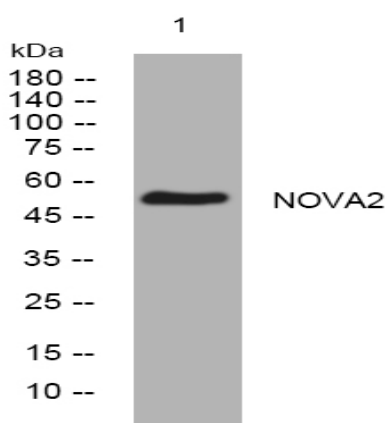
Subcellular**Location :**

Nucleus .

Expression :

Brain. Expression restricted to astrocytes.

Products Images



Western blot analysis of lysates from HeLa cells, primary antibody was diluted at 1:1000, 4° over night