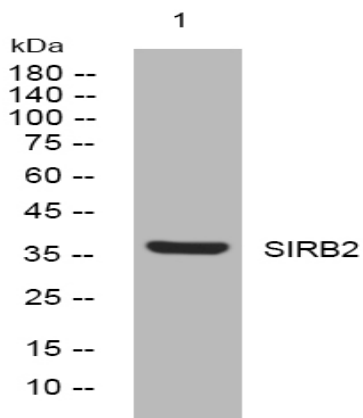


SIRB2 rabbit pAb

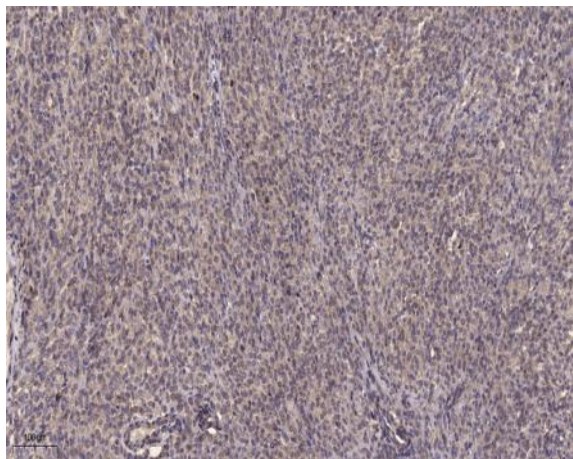
Catalog No :	YT6876
Reactivity :	Human
Applications :	WB;ELISA;IHC
Target :	SIRB2
Gene Name :	SIRPB2 PTPN1L PTPNS1L3
Protein Name :	SIRB2
Human Gene Id :	284759
Human Swiss Prot No :	Q5JXA9
Immunogen :	Synthesized peptide derived from human SIRB2 AA range: 48-98
Specificity :	This antibody detects endogenous levels of SIRB2 at Human
Formulation :	Liquid in PBS containing 50% glycerol, 0.5% BSA and 0.02% sodium azide.
Source :	Polyclonal, Rabbit,IgG
Dilution :	WB 1:500-2000;IHC 1:50-300; ELISA 2000-20000
Purification :	The antibody was affinity-purified from rabbit antiserum by affinity-chromatography using epitope-specific immunogen.
Concentration :	1 mg/ml
Storage Stability :	-15 °C to -25 °C/1 year(Do not lower than -25 °C)
Molecularweight :	38kD
Function :	similarity:Contains 2 Ig-like V-type (immunoglobulin-like) domains.,

**Subcellular
Location :**

Membrane ; Single-pass type I membrane protein .

Products Images

Western blot analysis of lysates from HeLa cells, primary antibody was diluted at 1:1000, 4° over night



Immunohistochemical analysis of paraffin-embedded human Colon cancer. 1, Antibody was diluted at 1:200(4° overnight). 2, Tris-EDTA,pH9.0 was used for antigen retrieval. 3,Secondary antibody was diluted at 1:200(room temperature, 45min).