

DMP4 rabbit pAb

Catalog No :	YT6873
Reactivity :	Human;Mouse
Applications :	WB
Target :	DMP4
Gene Name :	FAM20C DMP4
Protein Name :	DMP4
Human Gene Id :	56975
Human Swiss Prot No :	Q8IXL6
Mouse Gene Id :	80752
Mouse Swiss Prot No :	Q5MJS3
Immunogen :	Synthesized peptide derived from human DMP4 AA range: 328-378
Specificity :	This antibody detects endogenous levels of DMP4 at Human/Mouse
Formulation :	Liquid in PBS containing 50% glycerol, 0.5% BSA and 0.02% sodium azide.
Source :	Polyclonal, Rabbit,IgG
Dilution :	WB 1[?]500-2000
Purification :	The antibody was affinity-purified from rabbit antiserum by affinity-chromatography using epitope-specific immunogen.
Concentration :	1 mg/ml
Storage Stability :	-15°C to -25°C/1 year(Do not lower than -25°C)

Molecularweight : 64kD

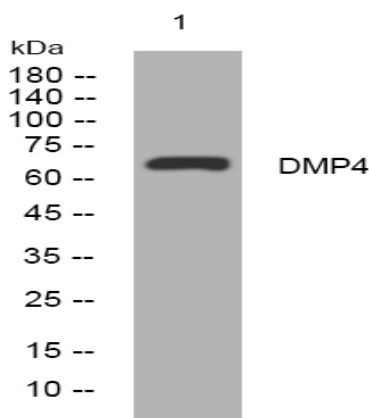
Background : This gene encodes a member of the family of secreted protein kinases. The encoded protein binds calcium and phosphorylates proteins involved in bone mineralization. Mutations in this gene are associated with the autosomal recessive disorder Raine syndrome. [provided by RefSeq, Apr 2014],

Function : disease:Defects in FAM20C are the cause of Raine syndrome (RNS) [MIM:259775]. RNS is an autosomal recessive osteosclerotic bone dysplasia with neonatal lethal outcome. Clinical features include generalized osteosclerosis, craniofacial dysplasia and microcephaly.,function:Calcium-binding protein which may play a role in dentin mineralization.,similarity:Belongs to the FAM20 family.,tissue specificity:Widely expressed.,

Subcellular Location : Secreted . Golgi apparatus .

Expression : Widely expressed.

Products Images



Western blot analysis of lysates from 293T cells, primary antibody was diluted at 1:1000, 4° over night