

GKN1 rabbit pAb

Catalog No :	YT6872
Reactivity :	Human;Mouse
Applications :	WB
Target :	GKN1
Gene Name :	GKN1 AMP18 CA11 UNQ489/PRO1005
Protein Name :	GKN1
Human Gene Id :	56287
Human Swiss Prot No :	Q9NS71
Mouse Gene Id :	66283
Mouse Swiss Prot No :	Q9CR36
Immunogen :	Synthesized peptide derived from human GKN1 AA range: 47-97
Specificity :	This antibody detects endogenous levels of GKN1 at Human/Mouse
Formulation :	Liquid in PBS containing 50% glycerol, 0.5% BSA and 0.02% sodium azide.
Source :	Polyclonal, Rabbit,IgG
Dilution :	WB 1[?]500-2000
Purification :	The antibody was affinity-purified from rabbit antiserum by affinity-chromatography using epitope-specific immunogen.
Concentration :	1 mg/ml
Storage Stability :	-15°C to -25°C/1 year(Do not lower than -25°C)

Molecularweight : 22kD

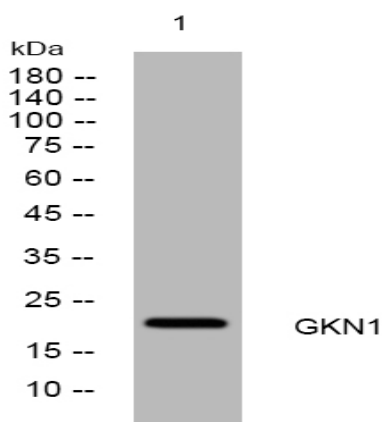
Background : The protein encoded by this gene is found to be down-regulated in human gastric cancer tissue as compared to normal gastric mucosa. [provided by RefSeq, Jul 2008],

Function : caution:It is uncertain whether Met-1 or Met-15 is the initiator.,function:Has mitogenic activity and may be involved in maintaining the integrity of the gastric mucosal epithelium.,similarity:Belongs to the gastrokine family.,similarity:Contains 1 BRICHOS domain.,tissue specificity:Expressed in stomach. No expression is detected in cancer tissue or gastric cancer cell lines.,

Subcellular Location : Secreted . Cytoplasmic granule . Golgi apparatus . Shows abundant granular cytoplasmic staining, with perinuclear accentuation suggestive of the Golgi apparatus. .

Expression : Expressed in stomach (at protein level). No expression is detected in cancer tissue or gastric cancer cell lines.

Products Images



Western blot analysis of lysates from HpeG2 cells, primary antibody was diluted at 1:1000, 4° over night