

FKBP7 rabbit pAb

Catalog No :	YT6866
Reactivity :	Human;Mouse
Applications :	WB
Target :	FKBP7
Gene Name :	FKBP7 FKBP23 UNQ670/PRO1304
Protein Name :	FKBP7
Human Gene Id :	51661
Human Swiss Prot No :	Q9Y680
Mouse Gene Id :	14231
Mouse Swiss Prot No :	O54998
Immunogen :	Synthesized peptide derived from human FKBP7 AA range: 189-239
Specificity :	This antibody detects endogenous levels of FKBP7 at Human/Mouse
Formulation :	Liquid in PBS containing 50% glycerol, 0.5% BSA and 0.02% sodium azide.
Source :	Polyclonal, Rabbit,IgG
Dilution :	WB 1:500-2000
Purification :	The antibody was affinity-purified from rabbit antiserum by affinity-chromatography using epitope-specific immunogen.
Concentration :	1 mg/ml
Storage Stability :	-15°C to -25°C/1 year(Do not lower than -25°C)

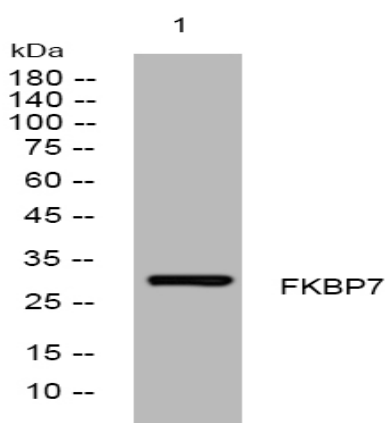
Molecularweight : 28kD

Background : The protein encoded by this gene belongs to the FKBP-type peptidyl-prolyl cis/trans isomerase (PPIase) family. Members of this family exhibit PPIase activity and function as molecular chaperones. A similar protein in mouse is located in the endoplasmic reticulum and binds calcium. [provided by RefSeq, Jul 2008],

Function : catalytic activity:Peptidylproline (omega=180) = peptidylproline (omega=0).,function:PPIases accelerate the folding of proteins during protein synthesis.,miscellaneous:Binds calcium.,PTM:Glycosylated.,similarity:Contains 1 PPIase FKBP-type domain.,similarity:Contains 2 EF-hand domains.,

Subcellular Location : Endoplasmic reticulum lumen .

Products Images



Western blot analysis of lysates from HuvEc cells, primary antibody was diluted at 1:1000, 4° over night