

FRPD2 rabbit pAb

Catalog No :	YT6860
Reactivity :	Human
Applications :	WB
Target :	FRPD2
Gene Name :	FRMPD2 PDZD5C PDZK4 PDZK5C
Protein Name :	FRPD2
Human Gene Id :	143162
Human Swiss Prot No :	Q68DX3
Immunogen :	Synthesized peptide derived from human FRPD2 AA range: 1161-1211
Specificity :	This antibody detects endogenous levels of FRPD2 at Human
Formulation :	Liquid in PBS containing 50% glycerol, 0.5% BSA and 0.02% sodium azide.
Source :	Polyclonal, Rabbit,IgG
Dilution :	WB 1:500-2000
Purification :	The antibody was affinity-purified from rabbit antiserum by affinity-chromatography using epitope-specific immunogen.
Concentration :	1 mg/ml
Storage Stability :	-15°C to -25°C/1 year(Do not lower than -25°C)
Molecularweight :	144kD
Background :	This gene encodes a peripheral membrane protein and is located in a region of chromosome 10q that contains a segmental duplication. This copy of the gene is full-length and is in the telomeric duplicated region. Two other more

centromerically proximal copies of the gene are partial and may represent pseudogenes. This full-length gene appears to function in the establishment and maintenance of cell polarization. The protein is recruited to cell-cell junctions in an E-cadherin-dependent manner, and is selectively localized at the basolateral membrane in polarized epithelial cells. Alternative splicing results in multiple transcript variants. [provided by RefSeq, Dec 2009],

Function :

caution:Could be the product of a pseudogene. This is the product of related genes or pseudogenes located in a region of chromosome 10q which contains a segmental duplication resulting in three nearly identical regions.,similarity:Contains 1 FERM domain.,similarity:Contains 1 KIND domain.,similarity:Contains 1 PDZ (DHR) domain.,similarity:Contains 2 PDZ (DHR) domains.,similarity:Contains 3 PDZ (DHR) domains.,

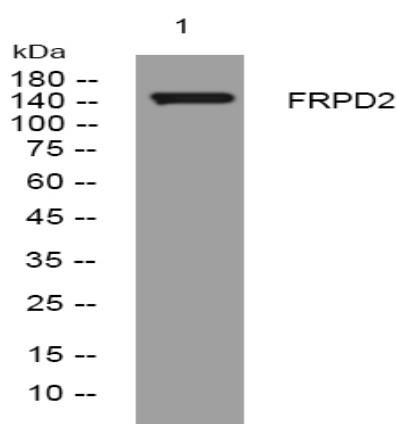
Subcellular Location :

Cytoplasm . Basolateral cell membrane . Cell junction, tight junction . Colocalizes with CTNNB1, CDH1 and PKP4 at the basolateral membrane. Colocalizes with TJP1 at tight junctions. Its recruitment to cell-cell contacts requires CDH1.

Expression :

Expressed in epithelial cells.

Products Images



Western blot analysis of lysates from THP-1 cells, primary antibody was diluted at 1:1000, 4° over night