

## AVPI1 rabbit pAb

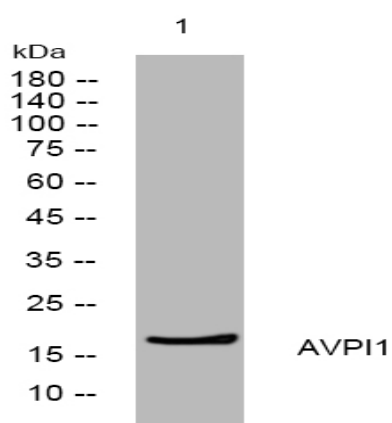
<b>Catalog No :</b>	YT6856
<b>Reactivity :</b>	Human;Mouse;Rat
<b>Applications :</b>	WB
<b>Target :</b>	AVPI1
<b>Gene Name :</b>	AVPI1 NPD013 PP5395
<b>Protein Name :</b>	AVPI1
<b>Human Gene Id :</b>	60370
<b>Human Swiss Prot No :</b>	Q5T686
<b>Mouse Gene Id :</b>	69534
<b>Mouse Swiss Prot No :</b>	Q9D7H4
<b>Rat Swiss Prot No :</b>	Q8VDA6
<b>Immunogen :</b>	Synthesized peptide derived from human AVPI1 AA range: 76-126
<b>Specificity :</b>	This antibody detects endogenous levels of AVPI1 at Human/Mouse/Rat
<b>Formulation :</b>	Liquid in PBS containing 50% glycerol, 0.5% BSA and 0.02% sodium azide.
<b>Source :</b>	Polyclonal, Rabbit,IgG
<b>Dilution :</b>	WB 1[?]500-2000
<b>Purification :</b>	The antibody was affinity-purified from rabbit antiserum by affinity-chromatography using epitope-specific immunogen.
<b>Concentration :</b>	1 mg/ml

**Storage Stability :** -15°C to -25°C/1 year(Do not lower than -25°C)

**Molecularweight :** 16kD

**Function :** function:May be involved in MAP kinase activation, epithelial sodium channel (ENaC) down-regulation and cell cycling.,

## Products Images



Western blot analysis of lysates from VEC cells, primary antibody was diluted at 1:1000, 4° over night