

RBMS2 rabbit pAb

| | |
|------------------------------|---|
| Catalog No : | YT6849 |
| Reactivity : | Human;Mouse |
| Applications : | WB;IHC |
| Target : | RBMS2 |
| Gene Name : | RBMS2 SCR3 |
| Protein Name : | RBMS2 |
| Human Gene Id : | 5939 |
| Human Swiss Prot No : | Q15434 |
| Mouse Gene Id : | 56516 |
| Mouse Swiss Prot No : | Q8VC70 |
| Immunogen : | Synthesized peptide derived from human RBMS2 AA range: 194-244 |
| Specificity : | This antibody detects endogenous levels of RBMS2 at Human/Mouse |
| Formulation : | Liquid in PBS containing 50% glycerol, 0.5% BSA and 0.02% sodium azide. |
| Source : | Polyclonal, Rabbit,IgG |
| Dilution : | WB 1:500-2000;IHC 1:50-300 |
| Purification : | The antibody was affinity-purified from rabbit antiserum by affinity-chromatography using epitope-specific immunogen. |
| Concentration : | 1 mg/ml |
| Storage Stability : | -15°C to -25°C/1 year(Do not lower than -25°C) |

Molecularweight : 45kD**Background :**

The protein encoded by this gene is a member of a small family of proteins which bind single stranded DNA/RNA. These proteins are characterized by the presence of two sets of ribonucleoprotein consensus sequence (RNP-CS) that contain conserved motifs, RNP1 and RNP2, originally described in RNA binding proteins, and required for DNA binding. The RBMS proteins have been implicated in such diverse functions as DNA replication, gene transcription, cell cycle progression and apoptosis. This protein was isolated by phenotypic complementation of *cdc2* and *cdc13* mutants of yeast and is thought to suppress *cdc2* and *cdc13* mutants through the induction of translation of *cdc2*. [provided by RefSeq, Jul 2008],

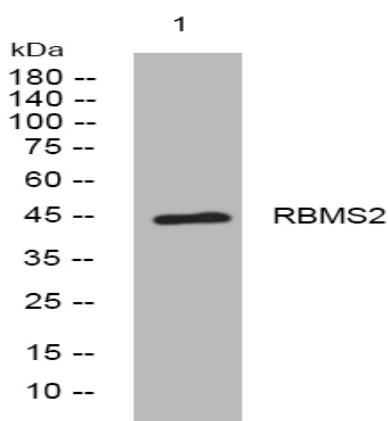
Function :

similarity:Contains 2 RRM (RNA recognition motif) domains.,

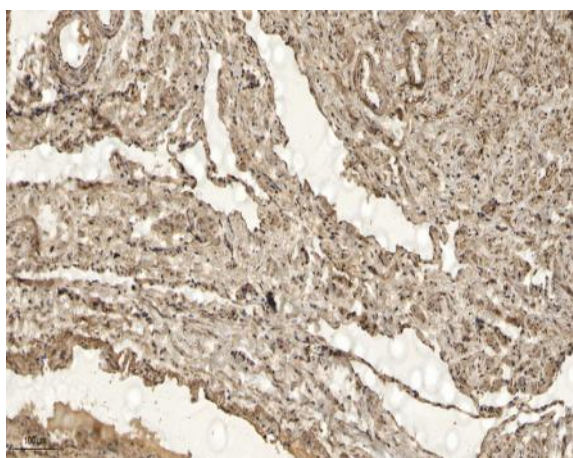
Subcellular Location :

Nucleus .

Products Images



Western blot analysis of lysates from K562 cells, primary antibody was diluted at 1:1000, 4° over night



Immunohistochemical analysis of paraffin-embedded human oophoroma. 1, Antibody was diluted at 1:200(4° overnight). 2, Tris-EDTA,pH9.0 was used for antigen retrieval. 3,Secondary antibody was diluted at 1:200(room temperature, 45min).