

BEX2 rabbit pAb

Catalog No :	YT6847
Reactivity :	Human;Mouse;Rat
Applications :	WB
Target :	BEX2
Gene Name :	BEX2
Protein Name :	BEX2
Human Gene Id :	84707
Human Swiss Prot No :	Q9BXY8
Mouse Gene Id :	12069
Mouse Swiss Prot No :	Q9WTZ8
Rat Gene Id :	363498
Rat Swiss Prot No :	Q3MKQ1
Immunogen :	Synthesized peptide derived from human BEX2 AA range: 28-78
Specificity :	This antibody detects endogenous levels of BEX2 at Human/Mouse/Rat
Formulation :	Liquid in PBS containing 50% glycerol, 0.5% BSA and 0.02% sodium azide.
Source :	Polyclonal, Rabbit,IgG
Dilution :	WB 1:500-2000
Purification :	The antibody was affinity-purified from rabbit antiserum by affinity-chromatography using epitope-specific immunogen.

Concentration : 1 mg/ml

Storage Stability : -15°C to -25°C/1 year(Do not lower than -25°C)

Molecularweight : 14kD

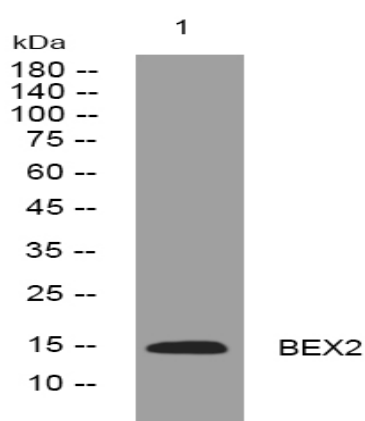
Background : This gene belongs to the brain expressed X-linked gene family. The encoded protein interacts with the transcription factor LIM domain only 2 in a DNA-binding complex that recognizes the E-box element and promotes transcription. This gene has been found to be a tumor suppressor that is silenced in human glioma. In breast cancer cells, this gene product modulates apoptosis in response to estrogen and tamoxifen, and enhances the anti-proliferative effect of tamoxifen. Multiple transcript variants encoding different isoforms have been found for this gene. [provided by RefSeq, Dec 2009],

Function : caution:Was named BEX1 by some authors.,similarity:Belongs to the BEX family.,subunit:Interacts with OMP (By similarity). Interacts with LMO2, possibly leading to regulate the transcriptional activity of a DNA-binding complex containing LMO2.,tissue specificity:Expressed in central nervous system, with high level in pituitary, cerebellum and temporal lobe.,

Subcellular Location : Cytoplasm . Nucleus .

Expression : Expressed in central nervous system, with high level in pituitary, cerebellum and temporal lobe. Widely expressed in breast cancer cell lines.

Products Images



Western blot analysis of lysates from HpeG2 cells, primary antibody was diluted at 1:1000, 4° over night