

TRPM3 rabbit pAb

Catalog No :	YT6846
Reactivity :	Human
Applications :	WB
Target :	TRPM3
Gene Name :	TRPM3 KIAA1616 LTRPC3
Protein Name :	TRPM3
Human Gene Id :	80036
Human Swiss Prot No :	Q9HCF6
Immunogen :	Synthesized peptide derived from human TRPM3 AA range: 666-716
Specificity :	This antibody detects endogenous levels of TRPM3 at Human
Formulation :	Liquid in PBS containing 50% glycerol, 0.5% BSA and 0.02% sodium azide.
Source :	Polyclonal, Rabbit,IgG
Dilution :	WB 1:500-2000
Purification :	The antibody was affinity-purified from rabbit antiserum by affinity-chromatography using epitope-specific immunogen.
Concentration :	1 mg/ml
Storage Stability :	-15°C to -25°C/1 year(Do not lower than -25°C)
Molecularweight :	191kD
Background :	The product of this gene belongs to the family of transient receptor potential (TRP) channels. TRP channels are cation-selective channels important for cellular calcium signaling and homeostasis. The protein encoded by this gene

mediates calcium entry, and this entry is potentiated by calcium store depletion. Alternatively spliced transcript variants encoding different isoforms have been identified. [provided by RefSeq, Jul 2008],

Function :

function:Calcium channel mediating constitutive calcium ion entry. Its activity is increased by reduction in extracellular osmolarity, by store depletion and muscarinic receptor activation.,similarity:Belongs to the transient receptor family. LTrpC subfamily.,tissue specificity:Expressed primarily in the kidney and, at lower levels, in brain, testis, ovary, pancreas and spinal cord. Expression in the brain and kidney was determined at protein level. In the kidney, expressed predominantly in the collecting tubular epithelium in the medulla, medullary rays, and periglomerular regions; in the brain, highest levels are found in the cerebellum, choroid plexus, the locus coeruleus, the posterior thalamus and the substantia nigra. Down-regulated in renal tumors compared to normal kidney.,

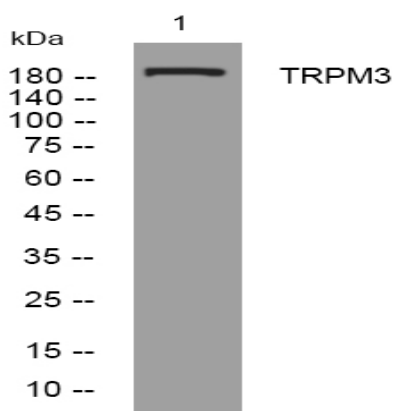
Subcellular Location :

Cell membrane ; Multi-pass membrane protein .

Expression :

Expressed primarily in the kidney and, at lower levels, in brain, testis, ovary, pancreas and spinal cord. Expression in the brain and kidney was determined at protein level. In the kidney, expressed predominantly in the collecting tubular epithelium in the medulla, medullary rays, and periglomerular regions; in the brain, highest levels are found in the cerebellum, choroid plexus, the locus coeruleus, the posterior thalamus and the substantia nigra. Down-regulated in renal tumors compared to normal kidney.

Products Images



Western blot analysis of lysates from U2OS cells, primary antibody was diluted at 1:1000, 4° over night