

NCEH1 rabbit pAb

Catalog No :	YT6842
Reactivity :	Human;Mouse;Rat
Applications :	WB;ELISA;IHC
Target :	NCEH1
Fields :	>>Cortisol synthesis and secretion;>>Cushing syndrome;>>Bile secretion;>>Cholesterol metabolism
Gene Name :	NCEH1 AADACL1 KIAA1363
Protein Name :	NCEH1
Human Gene Id :	57552
Human Swiss Prot No :	Q6PIU2
Mouse Gene Id :	320024
Mouse Swiss Prot No :	Q8BLF1
Rat Gene Id :	294930
Rat Swiss Prot No :	B2GV54
Immunogen :	Synthesized peptide derived from human NCEH1 AA range: 8-58
Specificity :	This antibody detects endogenous levels of NCEH1 at Human/Mouse/Rat
Formulation :	Liquid in PBS containing 50% glycerol, 0.5% BSA and 0.02% sodium azide.
Source :	Polyclonal, Rabbit,IgG
Dilution :	WB 1:500-2000;IHC 1:50-300; ELISA 2000-20000

Purification : The antibody was affinity-purified from rabbit antiserum by affinity-chromatography using epitope-specific immunogen.

Concentration : 1 mg/ml

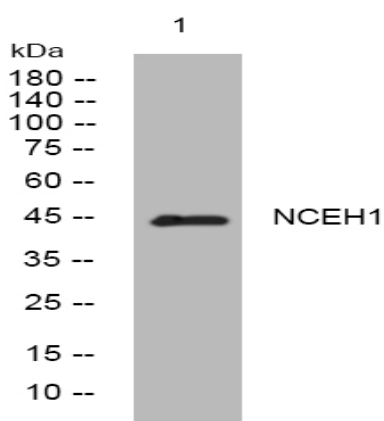
Storage Stability : -15°C to -25°C/1 year(Do not lower than -25°C)

Molecularweight : 45kD

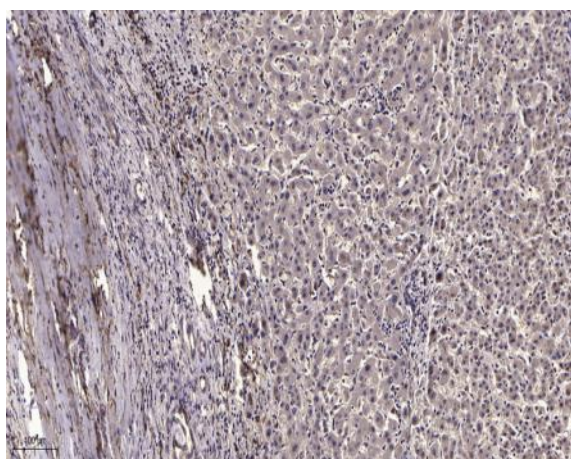
Subcellular Location : Cell membrane ; Single-pass type II membrane protein . Microsome .

Expression : Expressed in monocyte-derived macrophages. Up-regulated in invasive melanoma and breast carcinoma cell lines.

Products Images



Western blot analysis of lysates from MCF-7 cells, primary antibody was diluted at 1:1000, 4° over night



Immunohistochemical analysis of paraffin-embedded human liver cancer. 1, Antibody was diluted at 1:200(4° overnight). 2, Tris-EDTA,pH9.0 was used for antigen retrieval. 3,Secondary antibody was diluted at 1:200(room temperature, 45min).