

## CPSF2 rabbit pAb

<b>Catalog No :</b>	YT6830
<b>Reactivity :</b>	Human;Mouse
<b>Applications :</b>	WB
<b>Target :</b>	CPSF2
<b>Fields :</b>	>>mRNA surveillance pathway
<b>Gene Name :</b>	CPSF2 CPSF100 KIAA1367
<b>Protein Name :</b>	CPSF2
<b>Human Gene Id :</b>	53981
<b>Human Swiss Prot No :</b>	Q9P2I0
<b>Mouse Gene Id :</b>	51786
<b>Mouse Swiss Prot No :</b>	O35218
<b>Immunogen :</b>	Synthesized peptide derived from human CPSF2 AA range: 456-506
<b>Specificity :</b>	This antibody detects endogenous levels of CPSF2 at Human/Mouse
<b>Formulation :</b>	Liquid in PBS containing 50% glycerol, 0.5% BSA and 0.02% sodium azide.
<b>Source :</b>	Polyclonal, Rabbit,IgG
<b>Dilution :</b>	WB 1[?]500-2000
<b>Purification :</b>	The antibody was affinity-purified from rabbit antiserum by affinity-chromatography using epitope-specific immunogen.
<b>Concentration :</b>	1 mg/ml

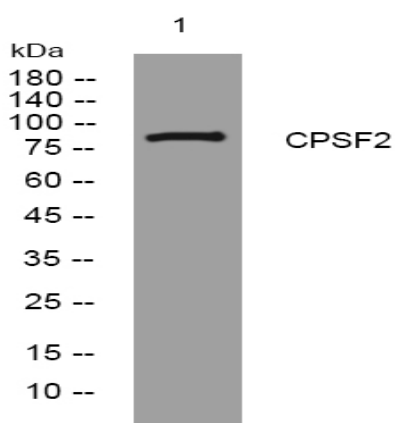
**Storage Stability :** -15°C to -25°C/1 year(Do not lower than -25°C)

**Molecularweight :** 86kD

**Function :** function:Component of the cleavage and polyadenylation specificity factor (CPSF) complex that play a key role in pre-mRNA 3'-end formation, recognizing the AAUAAA signal sequence and interacting with poly(A) polymerase and other factors to bring about cleavage and poly(A) addition.,similarity:Belongs to the metallo-beta-lactamase superfamily. RNA-metabolizing metallo-beta-lactamase-like family. CPSF2/YSH1 subfamily.,subunit:Component of the cleavage and polyadenylation specificity factor (CPSF) complex, composed of CPSF1, CPSF2, CPSF3, CPSF4 and FIP1L1.,

**Subcellular Location :** Nucleus .

## Products Images



Western blot analysis of lysates from MCF-7 cells, primary antibody was diluted at 1:1000, 4° over night