

## BTG1 rabbit pAb

<b>Catalog No :</b>	YT6828
<b>Reactivity :</b>	Human;Mouse;Rat
<b>Applications :</b>	WB
<b>Target :</b>	BTG1
<b>Fields :</b>	>>RNA degradation
<b>Gene Name :</b>	BTG1
<b>Protein Name :</b>	BTG1
<b>Human Gene Id :</b>	694
<b>Human Swiss Prot No :</b>	P62324
<b>Mouse Gene Id :</b>	12226
<b>Mouse Swiss Prot No :</b>	P62325
<b>Rat Gene Id :</b>	29618
<b>Rat Swiss Prot No :</b>	Q63073
<b>Immunogen :</b>	Synthesized peptide derived from human BTG1 AA range: 27-77
<b>Specificity :</b>	This antibody detects endogenous levels of BTG1 at Human/Mouse/Rat
<b>Formulation :</b>	Liquid in PBS containing 50% glycerol, 0.5% BSA and 0.02% sodium azide.
<b>Source :</b>	Polyclonal, Rabbit,IgG
<b>Dilution :</b>	WB 1[?]500-2000
<b>Purification :</b>	The antibody was affinity-purified from rabbit antiserum by affinity-

chromatography using epitope-specific immunogen.

**Concentration :** 1 mg/ml

**Storage Stability :** -15°C to -25°C/1 year (Do not lower than -25°C)

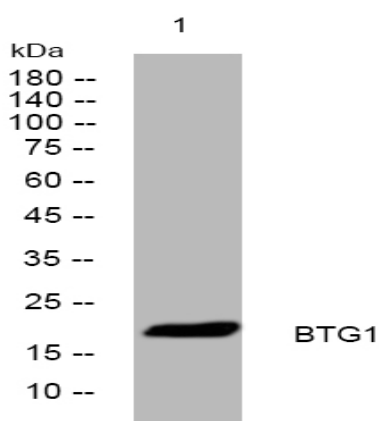
**Molecularweight :** 19kD

**Background :** This gene is a member of an anti-proliferative gene family that regulates cell growth and differentiation. Expression of this gene is highest in the G0/G1 phases of the cell cycle and downregulated when cells progressed through G1. The encoded protein interacts with several nuclear receptors, and functions as a coactivator of cell differentiation. This locus has been shown to be involved in a t(8;12)(q24;q22) chromosomal translocation in a case of B-cell chronic lymphocytic leukemia. [provided by RefSeq, Oct 2008],

**Function :** developmental stage:Its expression is associated with the early G1 phase of the cell cycle.,disease:A chromosomal aberration involving BTG1 may be a cause of a form of B-cell chronic lymphocytic leukemia. Translocation t(8;12)(q24;q22) with MYC.,function:Anti-proliferative protein.,similarity:Belongs to the BTG family.,

**Subcellular Location :** nucleus,cytoplasm,

## Products Images



Western blot analysis of lysates from A549 cells, primary antibody was diluted at 1:1000, 4° over night