

**S7A13 rabbit pAb**

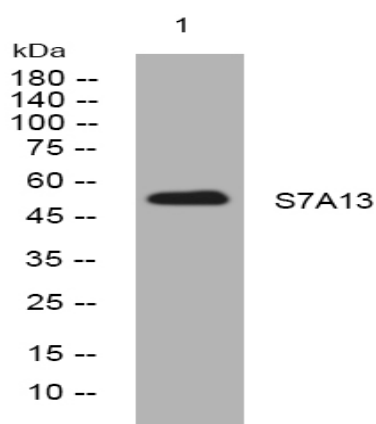
<b>Catalog No :</b>	YT6826
<b>Reactivity :</b>	Human;Mouse;Rat
<b>Applications :</b>	WB
<b>Target :</b>	S7A13
<b>Gene Name :</b>	SLC7A13 AGT1 XAT2
<b>Protein Name :</b>	S7A13
<b>Human Gene Id :</b>	157724
<b>Human Swiss Prot No :</b>	Q8TCU3
<b>Mouse Gene Id :</b>	74087
<b>Mouse Swiss Prot No :</b>	Q91WN3
<b>Rat Gene Id :</b>	313089
<b>Rat Swiss Prot No :</b>	Q5RKI7
<b>Immunogen :</b>	Synthesized peptide derived from human S7A13 AA: 20-50
<b>Specificity :</b>	This antibody detects endogenous levels of S7A13 at Human/Mouse/Rat
<b>Formulation :</b>	Liquid in PBS containing 50% glycerol, 0.5% BSA and 0.02% sodium azide.
<b>Source :</b>	Polyclonal, Rabbit,IgG
<b>Dilution :</b>	WB 1:500-2000
<b>Purification :</b>	The antibody was affinity-purified from rabbit antiserum by affinity-chromatography using epitope-specific immunogen.

---

<b>Concentration :</b>	<u>1 mg/ml</u>
<b>Storage Stability :</b>	<u>-15°C to -25°C/1 year(Do not lower than -25°C)</u>
<b>Molecularweight :</b>	<u>52kD</u>
<b>Function :</b>	<u>function:Mediates the transport L-aspartate and L-glutamate in a sodium-independent manner.,similarity:Belongs to the amino acid-polyamine-organocation (APC) superfamily.,tissue specificity:Expressed in the kidney.,</u>
<b>Subcellular Location :</b>	<u>Membrane ; Multi-pass membrane protein .</u>
<b>Expression :</b>	<u>Expressed in the kidney.</u>

---

## Products Images



Western blot analysis of lysates from HeLa cells, primary antibody was diluted at 1:1000, 4° over night