

**U17L5 rabbit pAb**

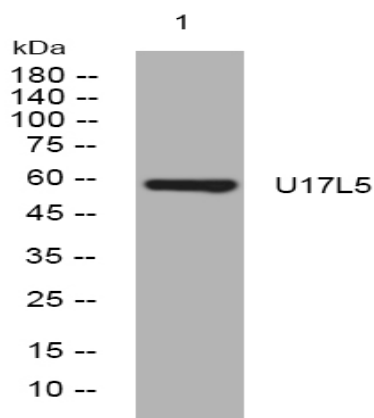
<b>Catalog No :</b>	YT6822
<b>Reactivity :</b>	Human
<b>Applications :</b>	WB
<b>Target :</b>	U17L5
<b>Gene Name :</b>	USP17L5
<b>Protein Name :</b>	U17L5
<b>Human Gene Id :</b>	728386
<b>Human Swiss Prot No :</b>	A8MUK1
<b>Immunogen :</b>	Synthesized peptide derived from human U17L5 AA range: 308-358
<b>Specificity :</b>	This antibody detects endogenous levels of U17L5 at Human
<b>Formulation :</b>	Liquid in PBS containing 50% glycerol, 0.5% BSA and 0.02% sodium azide.
<b>Source :</b>	Polyclonal, Rabbit,IgG
<b>Dilution :</b>	WB 1[?]500-2000
<b>Purification :</b>	The antibody was affinity-purified from rabbit antiserum by affinity-chromatography using epitope-specific immunogen.
<b>Concentration :</b>	1 mg/ml
<b>Storage Stability :</b>	-15°C to -25°C/1 year(Do not lower than -25°C)
<b>Molecularweight :</b>	58kD
<b>Function :</b>	catalytic activity:Ubiquitin C-terminal thioester + H(2)O = ubiquitin + a thiol.,caution:The RS447 megasatellite DNA is a highly polymorphic conserved tandem repetitive sequence which contains a copy of USP17. It is present with an

interindividual variation in copy number and between 20 to 103 copies can be found in the genome both on chromosome 4 and chromosome 8.,function:Functions in cell apoptosis. Cleaves ubiquitin fusion protein substrates.,similarity:Belongs to the peptidase C19 family. USP17 subfamily.,

**Subcellular Location :**

Nucleus . Endoplasmic reticulum .

## Products Images



Western blot analysis of lysates from 3T3 cells, primary antibody was diluted at 1:1000, 4 ° over night