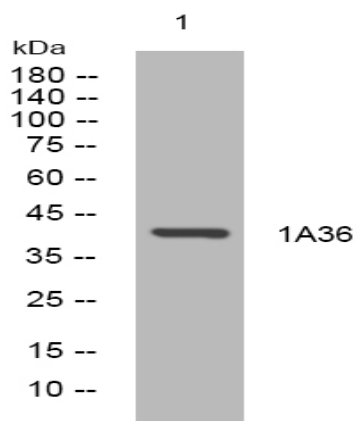


## 1A36 rabbit pAb

<b>Catalog No :</b>	YT6818
<b>Reactivity :</b>	Human;Rat;Mouse;
<b>Applications :</b>	WB
<b>Target :</b>	1A36
<b>Gene Name :</b>	HLA-A HLAA
<b>Protein Name :</b>	1A36
<b>Human Swiss Prot No :</b>	P30455
<b>Immunogen :</b>	Synthesized peptide derived from human 1A36 AA range: 150-200
<b>Specificity :</b>	This antibody detects endogenous levels of 1A36 at Human
<b>Formulation :</b>	Liquid in PBS containing 50% glycerol, 0.5% BSA and 0.02% sodium azide.
<b>Source :</b>	Polyclonal, Rabbit,IgG
<b>Dilution :</b>	WB 1:500-2000
<b>Purification :</b>	The antibody was affinity-purified from rabbit antiserum by affinity-chromatography using epitope-specific immunogen.
<b>Concentration :</b>	1 mg/ml
<b>Storage Stability :</b>	-15°C to -25°C/1 year(Do not lower than -25°C)
<b>Molecularweight :</b>	40kD

## Products Images



Western blot analysis of lysates from HpeG2 cells, primary antibody was diluted at 1:1000, 4° over night