

Z324B rabbit pAb

Catalog No :	YT6817
Reactivity :	Human
Applications :	WB
Target :	Z324B
Fields :	>>Herpes simplex virus 1 infection
Gene Name :	ZNF324B
Protein Name :	Z324B
Human Gene Id :	388569
Human Swiss Prot No :	Q6AW86
Immunogen :	Synthesized peptide derived from human Z324B AA range: 453-503
Specificity :	This antibody detects endogenous levels of Z324B at Human
Formulation :	Liquid in PBS containing 50% glycerol, 0.5% BSA and 0.02% sodium azide.
Source :	Polyclonal, Rabbit,IgG
Dilution :	WB 1[?]500-2000
Purification :	The antibody was affinity-purified from rabbit antiserum by affinity-chromatography using epitope-specific immunogen.
Concentration :	1 mg/ml
Storage Stability :	-15°C to -25°C/1 year(Do not lower than -25°C)
Molecularweight :	60kD

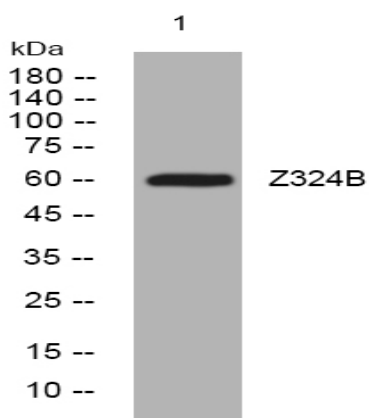
Function :

function:May be involved in transcriptional regulation.,similarity:Belongs to the krueppel C2H2-type zinc-finger protein family.,similarity:Contains 1 KRAB domain.,similarity:Contains 9 C2H2-type zinc fingers.,

Subcellular Location :

Nucleus .

Products Images



Western blot analysis of lysates from DU145 cells, primary antibody was diluted at 1:1000, 4° over night