

## SPRE2 rabbit pAb

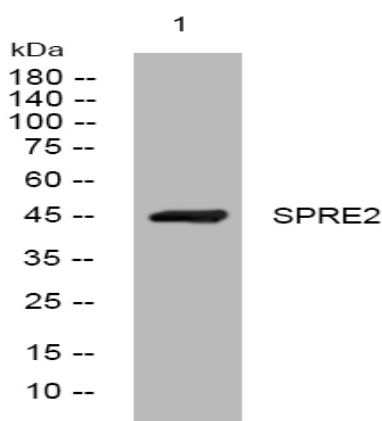
<b>Catalog No :</b>	YT6816
<b>Reactivity :</b>	Human;Mouse;Rat
<b>Applications :</b>	WB;IHC
<b>Target :</b>	SPRE2
<b>Gene Name :</b>	SPRED2
<b>Protein Name :</b>	SPRE2
<b>Human Gene Id :</b>	200734
<b>Human Swiss Prot No :</b>	Q7Z698
<b>Mouse Gene Id :</b>	114716
<b>Mouse Swiss Prot No :</b>	Q924S7
<b>Rat Gene Id :</b>	305539
<b>Rat Swiss Prot No :</b>	Q3C2P8
<b>Immunogen :</b>	Synthesized peptide derived from human SPRE2 AA range: 68-118
<b>Specificity :</b>	This antibody detects endogenous levels of SPRE2 at Human/Mouse/Rat
<b>Formulation :</b>	Liquid in PBS containing 50% glycerol, 0.5% BSA and 0.02% sodium azide.
<b>Source :</b>	Polyclonal, Rabbit,IgG
<b>Dilution :</b>	WB 1:500-2000;IHC 1:50-300
<b>Purification :</b>	The antibody was affinity-purified from rabbit antiserum by affinity-chromatography using epitope-specific immunogen.

---

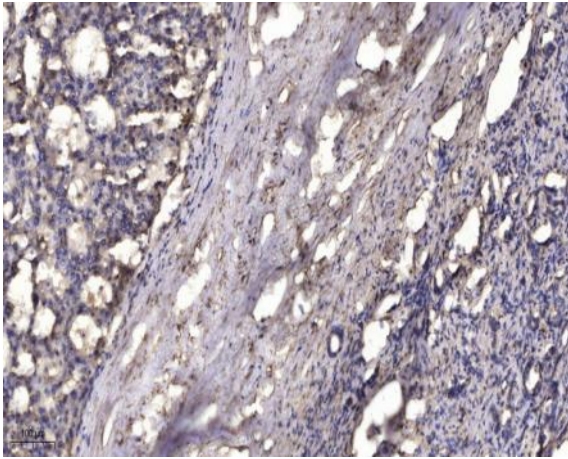
<b>Concentration :</b>	1 mg/ml
<b>Storage Stability :</b>	-15°C to -25°C/1 year(Do not lower than -25°C)
<b>Molecularweight :</b>	46kD
<b>Background :</b>	SPRED2 is a member of the Sprouty (see SPRY1; MIM 602465)/SPRED family of proteins that regulate growth factor-induced activation of the MAP kinase cascade (see MAPK1; MIM 176948) (Nonami et al., 2004 [PubMed 15465815]).[supplied by OMIM, Mar 2008],
<b>Function :</b>	function:Tyrosine kinase substrate that inhibits growth-factor-mediated activation of MAP kinase.,PTM:Phosphorylated on tyrosine. Phosphorylation of Tyr-228 and Tyr-231 are required for ubiquitination.,PTM:Ubiquitinated; leading to degradation by the proteasome.,similarity:Contains 1 KBD domain.,similarity:Contains 1 SPR (sprouty) domain.,similarity:Contains 1 WH1 domain.,subcellular location:Especially found in the cytoplasm of the stratum spinosum cells called membrane-coated granules.,subunit:Interacts with Ras (By similarity). Homodimer and heterodimer. Able to interact with SPRED1 to form heterodimers.,tissue specificity:Expressed in liver, skin, small intestine, salivary gland and prostate.,
<b>Subcellular Location :</b>	Cell membrane ; Peripheral membrane protein ; Cytoplasmic side . Cytoplasmic vesicle, secretory vesicle membrane ; Peripheral membrane protein ; Cytoplasmic side . Cytoplasm . Detected in the cytoplasm of the stratum spinosum cells, where it is associated with cytoplasmic vesicles that are supposed to be secretory granules. .
<b>Expression :</b>	Expressed in liver, skin, small intestine, salivary gland and prostate.

---

## Products Images



Western blot analysis of lysates from KB cells, primary antibody was diluted at 1:1000, 4° over night



Immunohistochemical analysis of paraffin-embedded human liver cancer. 1, Antibody was diluted at 1:200(4° overnight). 2, Tris-EDTA,pH9.0 was used for antigen retrieval. 3,Secondary antibody was diluted at 1:200(room temperature, 45min).