

CMPK2 rabbit pAb

Catalog No :	YT6811
Reactivity :	Human;Mouse
Applications :	WB
Target :	CMPK2
Fields :	>>Pyrimidine metabolism;>>Metabolic pathways;>>Nucleotide metabolism;>>Biosynthesis of cofactors
Gene Name :	CMPK2
Protein Name :	CMPK2
Human Gene Id :	129607
Human Swiss Prot No :	Q5EBM0
Mouse Gene Id :	22169
Mouse Swiss Prot No :	Q3U5Q7
Immunogen :	Synthesized peptide derived from human CMPK2 AA range: 57-107
Specificity :	This antibody detects endogenous levels of CMPK2 at Human/Mouse
Formulation :	Liquid in PBS containing 50% glycerol, 0.5% BSA and 0.02% sodium azide.
Source :	Polyclonal, Rabbit,IgG
Dilution :	WB 1[?]500-2000
Purification :	The antibody was affinity-purified from rabbit antiserum by affinity-chromatography using epitope-specific immunogen.
Concentration :	1 mg/ml

Storage Stability : -15°C to -25°C/1 year(Do not lower than -25°C)

Molecularweight : 49kD

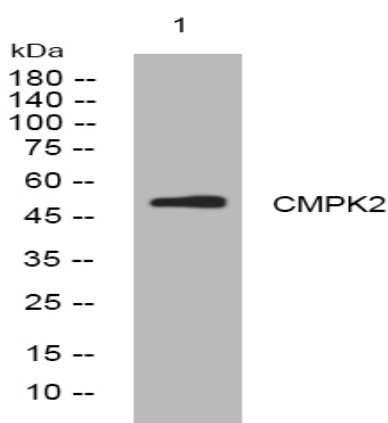
Background : This gene encodes one of the enzymes in the nucleotide synthesis salvage pathway that may participate in terminal differentiation of monocytic cells. Multiple transcript variants encoding different isoforms have been found for this gene. [provided by RefSeq, Feb 2012],

Function : catalytic activity:ATP + (d)CMP = ADP + (d)CDP.,function:May participate in dUTP and dCTP synthesis in mitochondria. Is able to phosphorylate dUMP, dCMP, CMP, UMP and monophosphates of the pyrimidine nucleoside analogs ddC, dFdC, araC, BVDU and FdUrd with ATP as phosphate donor. Efficacy is highest for dUMP followed by dCMP; CMP and UMP are poor substrates. May be involved in mtDNA depletion caused by long term treatment with ddC or other pyrimidine analogs.,similarity:Belongs to the thymidylate kinase family.,tissue specificity:Among all investigated tumors, leukemia cells show the most abundant expression.,

Subcellular Location : Mitochondrion .

Expression : Among all investigated tumors, leukemia cells show the most abundant expression.

Products Images



Western blot analysis of lysates from DU145 cells, primary antibody was diluted at 1:1000, 4° over night