

DRAM2 rabbit pAb

Catalog No :	YT6810
Reactivity :	Human;Mouse;Rat
Applications :	WB
Target :	DRAM2
Gene Name :	DRAM2 TMEM77 PSEC0031 UNQ154/PRO180
Protein Name :	DRAM2
Human Gene Id :	128338
Human Swiss Prot No :	Q6UX65
Mouse Gene Id :	67171
Mouse Swiss Prot No :	Q9CR48
Rat Gene Id :	362011
Rat Swiss Prot No :	Q5BK09
Immunogen :	Synthesized peptide derived from human DRAM2 AA range: 57-107
Specificity :	This antibody detects endogenous levels of DRAM2 at Human/Mouse/Rat
Formulation :	Liquid in PBS containing 50% glycerol, 0.5% BSA and 0.02% sodium azide.
Source :	Polyclonal, Rabbit,IgG
Dilution :	WB 1:500-2000
Purification :	The antibody was affinity-purified from rabbit antiserum by affinity-chromatography using epitope-specific immunogen.

Concentration : 1 mg/ml

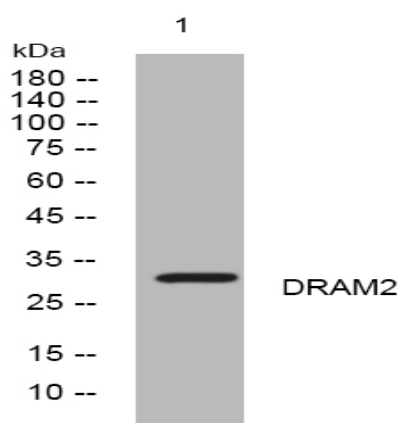
Storage Stability : -15°C to -25°C/1 year(Do not lower than -25°C)

Molecularweight : 29kD

Subcellular Location : Lysosome membrane ; Multi-pass membrane protein . Photoreceptor inner segment . Apical cell membrane . Localized to photoreceptor inner segments and to the apical surface of retinal pigment epithelial cells .

Expression : Expression is down-regulated in ovarian tumors (at protein level). Widely expressed with highest levels in placenta and heart. Expressed in the retina. Not detected in brain or thymus.

Products Images



Western blot analysis of lysates from THP-1 cells, primary antibody was diluted at 1:1000, 4° over night