

## SPAT2 rabbit pAb

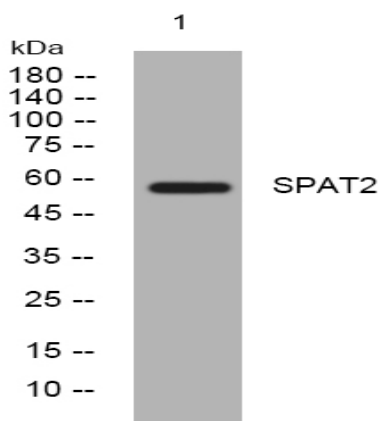
<b>Catalog No :</b>	YT6802
<b>Reactivity :</b>	Human;Rat;Mouse;
<b>Applications :</b>	WB;ELISA;IHC
<b>Target :</b>	SPAT2
<b>Fields :</b>	>>Necroptosis
<b>Gene Name :</b>	SPATA2 KIAA0757 PD1
<b>Protein Name :</b>	SPAT2
<b>Human Gene Id :</b>	9825
<b>Human Swiss Prot No :</b>	Q9UM82
<b>Immunogen :</b>	Synthesized peptide derived from human SPAT2 AA range: 119-169
<b>Specificity :</b>	This antibody detects endogenous levels of SPAT2 at Human
<b>Formulation :</b>	Liquid in PBS containing 50% glycerol, 0.5% BSA and 0.02% sodium azide.
<b>Source :</b>	Polyclonal, Rabbit,IgG
<b>Dilution :</b>	WB 1:500-2000;IHC 1:50-300; ELISA 2000-20000
<b>Purification :</b>	The antibody was affinity-purified from rabbit antiserum by affinity-chromatography using epitope-specific immunogen.
<b>Concentration :</b>	1 mg/ml
<b>Storage Stability :</b>	-15°C to -25°C/1 year(Do not lower than -25°C)
<b>Molecularweight :</b>	57kD

**Function :** function:May have a role in the regulation of spermatogenesis.,similarity:Belongs to the SPATA2 family.,tissue specificity:Highly expressed in Sertoli cells, but not detected in spermatogenic cells. Low expression in spleen, thymus and prostate.,

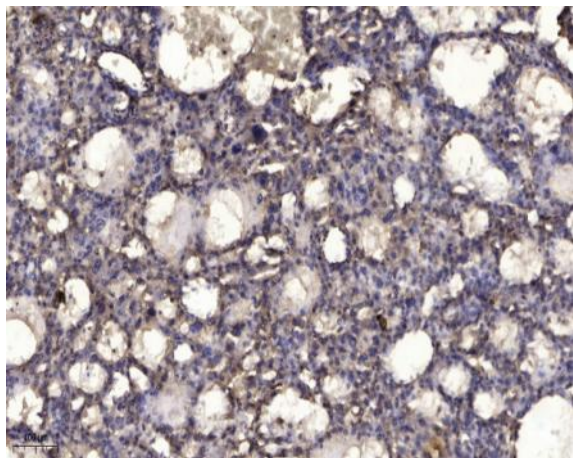
**Subcellular Location :** Cytoplasm . Nucleus . Detected in the tubular compartment of the testis and, in the cytoplasm of the Sertoli cells. .

**Expression :** Present at high level in Sertoli cells, but not detected in spermatogenic cells (at protein level) (PubMed:10222154, PubMed:11079456). Low expression in spleen, thymus and prostate (PubMed:10222154).

## Products Images



Western blot analysis of lysates from MCF-7 cells, primary antibody was diluted at 1:1000, 4° over night



Immunohistochemical analysis of paraffin-embedded human liver cancer. 1, Antibody was diluted at 1:200(4° overnight). 2, Tris-EDTA,pH9.0 was used for antigen retrieval. 3,Secondary antibody was diluted at 1:200(room temperature, 45min).