

MUC4 rabbit mAb(ABT174R)

Catalog No :	YM7269
Reactivity :	Human
Applications :	IHC;IF;ELISA
Target :	MUC4
Gene Name :	MUC4
Protein Name :	MUC4
Human Gene Id :	3662
Human Swiss Prot No :	Q99102
Immunogen :	Synthesized peptide derived from human MUC4
Specificity :	This antibody detects endogenous levels of MUC4 at Human
Formulation :	Liquid in PBS containing 50% glycerol, 0.5% BSA and 0.02% sodium azide.
Source :	Monoclonal, Rabbit,IgG
Dilution :	IHC 1:50. IF 1:50-200, ELISA 1:5000-20000
Purification :	The antibody was affinity-purified from Cell supernatant by affinity-chromatography using specific immunogen.
Storage Stability :	-15°C to -25°C/1 year(Do not lower than -25°C)
Function :	alternative products:Additional isoforms exist,developmental stage:Expressed early in the primitive gut before respiratory and digestive epithelial cells have acquired their tissue and cell specificity. Expressed at the basal surface of the epithelium from week 14 to 26 weeks and then predominantly localized in only parietal cells. Immediately before birth, found in the cytoplasm of the mucous columnar epithelial cells. In the embryo expressed in skin, then disappears late in gestation.,function:May play a role in tumor progression. Ability to promote tumor growth may be mainly due to repression of apoptosis as opposed to proliferation.

Has anti-adhesive properties. Seems to alter cellular behavior through both anti-adhesive effects on cell-cell and cell-extracellular matrix interactions and in its ability to act as an intramembrane ligand for ERBB2. Plays an important role in cell proliferation.

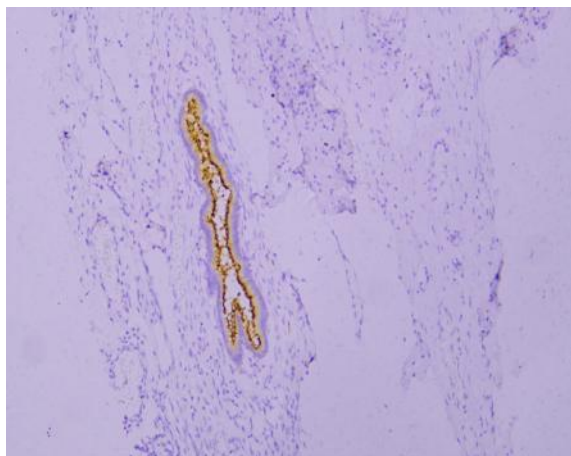
Subcellular Location :

[Mucin-4 beta chain]: Cell membrane ; Single-pass membrane protein . Isoforms lacking the Cys-rich region, EGF-like domains and transmembrane region are secreted. Secretion occurs by splicing or proteolytic processing. .; [Mucin-4 alpha chain]: Cell membrane . Secreted . Forms a complex with Mucin-4 beta chain at the cell membrane. .; [Isoform 3]: Cell membrane ; Single-pass membrane protein .; [Isoform 11]: Secreted .; [Isoform 15]: Secreted .; [Isoform 17]: Cell membrane ; Single-pass membrane protein .

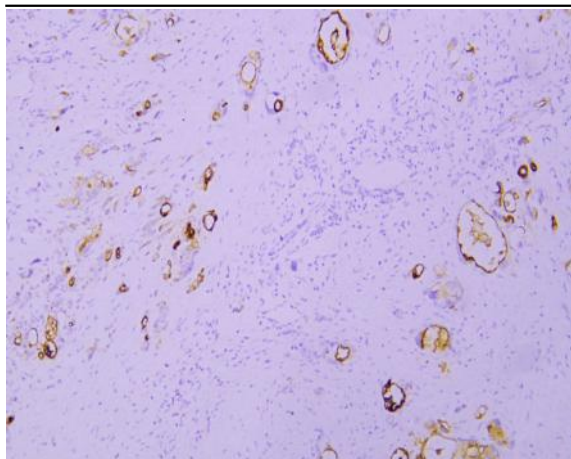
Expression :

Expressed in the thymus, thyroid, lung, trachea, esophagus, stomach, small intestine, colon, testis, prostate, ovary, uterus, placenta, and mammary and salivary glands. Expressed in carcinomas arising from some of these epithelia, such as lung cancers, squamous cell carcinomas of the upper aerodigestive tract, mammary carcinomas, biliary tract, colon, and cervix cancers. Minimally or not expressed in the normal pancreas or chronic pancreatitis, but is highly expressed in pancreatic tumors and pancreatic tumor cell lines.

Products Images



Immunohistochemical analysis of paraffin-embedded human Cervical squamous carcinoma. 1, Antibody was incubated at 4 ° overnight. 2, Citrate buffer of pH6.0 was used for antigen retrieval. 3, Secondary antibody was diluted at 1:200 (room temperature, 30min).



Immunohistochemical analysis of paraffin-embedded human Pancreatic carcinoma. 1, Antibody was incubated at 4° overnight. 2, Citrate buffer of pH6.0 was used for antigen retrieval. 3,Secondary antibody was diluted at 1:200(room temperature, 30min).