

ERP29 rabbit pAb

Catalog No :	YT6795
Reactivity :	Human;Mouse;Rat
Applications :	WB
Target :	ERP29
Fields :	>>Protein processing in endoplasmic reticulum
Gene Name :	ERP29 C12orf8 ERP28
Protein Name :	ERP29
Human Gene Id :	10961
Human Swiss Prot No :	P30040
Mouse Gene Id :	67397
Mouse Swiss Prot No :	P57759
Rat Gene Id :	117030
Rat Swiss Prot No :	P52555
Immunogen :	Synthesized peptide derived from human ERP29 AA range: 141-191
Specificity :	This antibody detects endogenous levels of ERP29 at Human/Mouse/Rat
Formulation :	Liquid in PBS containing 50% glycerol, 0.5% BSA and 0.02% sodium azide.
Source :	Polyclonal, Rabbit,IgG
Dilution :	WB 1[?]500-2000
Purification :	The antibody was affinity-purified from rabbit antiserum by affinity-

chromatography using epitope-specific immunogen.

Concentration : 1 mg/ml

Storage Stability : -15°C to -25°C/1 year(Do not lower than -25°C)

Molecularweight : 29kD

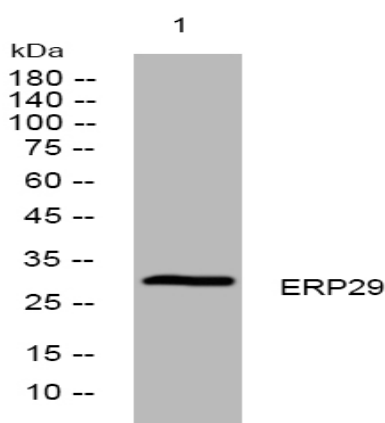
Background : This gene encodes a reticuloplasmin, a protein which resides in the lumen of the endoplasmic reticulum (ER). The protein shows sequence similarity to the protein disulfide isomerase family. However, it lacks the thioredoxin motif characteristic of this family, suggesting that this protein does not function as a disulfide isomerase. The protein dimerizes and is thought to play a role in the processing of secretory proteins within the ER. Alternative splicing results in multiple transcript variants encoding different isoforms. [provided by RefSeq, Jul 2008],

Function : function:Does not seem to be a disulfide isomerase. Plays an important role in the processing of secretory proteins within the endoplasmic reticulum (ER), possibly by participating in the folding of proteins in the ER.,subcellular location:Identified by mass spectrometry in melanosome fractions from stage I to stage IV.,subunit:Homodimer. Part a large chaperone multiprotein complex comprising CABP1, DNAJB11, HSP90B1, HSPA5, HYOU, PDIA2, PDIA4, PPIB, SDF2L1, UGT1A1 and very small amounts of ERP29, but not, or at very low levels, CALR nor CANX.,tissue specificity:Ubiquitous. Mostly expressed in secretory tissues.,

Subcellular Location : Endoplasmic reticulum lumen. Melanosome. Identified by mass spectrometry in melanosome fractions from stage I to stage IV.

Expression : Ubiquitous. Mostly expressed in secretory tissues.

Products Images



Western blot analysis of lysates from HeLa cells, primary antibody was diluted at 1:1000, 4° over night