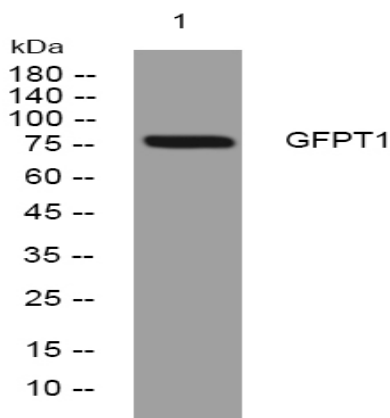


GFPT1 rabbit pAb

Catalog No :	YT6792
Reactivity :	Human;Mouse;Rat
Applications :	WB
Target :	GFPT1
Fields :	>>Alanine, aspartate and glutamate metabolism;>>Amino sugar and nucleotide sugar metabolism;>>Metabolic pathways;>>Biosynthesis of nucleotide sugars;>>Insulin resistance;>>Diabetic cardiomyopathy
Gene Name :	GFPT1 GFAT GFPT
Protein Name :	GFPT1
Human Gene Id :	2673
Human Swiss Prot No :	Q06210
Mouse Gene Id :	14583
Mouse Swiss Prot No :	P47856
Rat Gene Id :	297417
Rat Swiss Prot No :	P82808
Immunogen :	Synthesized peptide derived from human GFPT1 AA range: 198-248
Specificity :	This antibody detects endogenous levels of GFPT1 at Human/Mouse/Rat
Formulation :	Liquid in PBS containing 50% glycerol, 0.5% BSA and 0.02% sodium azide.
Source :	Polyclonal, Rabbit,IgG
Dilution :	WB 1:500-2000

Purification :	The antibody was affinity-purified from rabbit antiserum by affinity-chromatography using epitope-specific immunogen.
Concentration :	1 mg/ml
Storage Stability :	-15°C to -25°C/1 year(Do not lower than -25°C)
Molecularweight :	77kD
Background :	This gene encodes the first and rate-limiting enzyme of the hexosamine pathway and controls the flux of glucose into the hexosamine pathway. The product of this gene catalyzes the formation of glucosamine 6-phosphate. [provided by RefSeq, Sep 2008],
Function :	catalytic activity:L-glutamine + D-fructose 6-phosphate = L-glutamate + D-glucosamine 6-phosphate.,function:Controls the flux of glucose into the hexosamine pathway. Most likely involved in regulating the availability of precursors for N- and O-linked glycosylation of proteins.,pathway:Nucleotide-sugar biosynthesis; UDP-N-acetyl-D-glucosamine biosynthesis; D-glucosamine 6-phosphate from D-fructose 6-phosphate: step 1/1.,similarity:Contains 1 glutamine amidotransferase type-2 domain.,similarity:Contains 2 SIS domains.,subunit:Homotetramer .,tissue specificity:Isoform 1 is predominantly expressed in skeletal muscle. Not expressed in brain. Seems to be selectively expressed in striated muscle.,
Subcellular Location :	cytosol,extracellular exosome,
Expression :	Isoform 1 is predominantly expressed in skeletal muscle. Not expressed in brain. Seems to be selectively expressed in striated muscle.

Products Images



Western blot analysis of lysates from 293T cells, primary antibody was diluted at 1:1000, 4° over night