

## PLD6 rabbit pAb

<b>Catalog No :</b>	YT6790
<b>Reactivity :</b>	Human;Mouse
<b>Applications :</b>	WB;IHC
<b>Target :</b>	PLD6
<b>Gene Name :</b>	PLD6
<b>Protein Name :</b>	PLD6
<b>Human Gene Id :</b>	201164
<b>Human Swiss Prot No :</b>	Q8N2A8
<b>Mouse Gene Id :</b>	194908
<b>Mouse Swiss Prot No :</b>	Q5SWZ9
<b>Immunogen :</b>	Synthesized peptide derived from human PLD6 AA range: 29-79
<b>Specificity :</b>	This antibody detects endogenous levels of PLD6 at Human/Mouse
<b>Formulation :</b>	Liquid in PBS containing 50% glycerol, 0.5% BSA and 0.02% sodium azide.
<b>Source :</b>	Polyclonal, Rabbit,IgG
<b>Dilution :</b>	WB 1:500-2000;IHC 1:50-300
<b>Purification :</b>	The antibody was affinity-purified from rabbit antiserum by affinity-chromatography using epitope-specific immunogen.
<b>Concentration :</b>	1 mg/ml
<b>Storage Stability :</b>	-15°C to -25°C/1 year(Do not lower than -25°C)

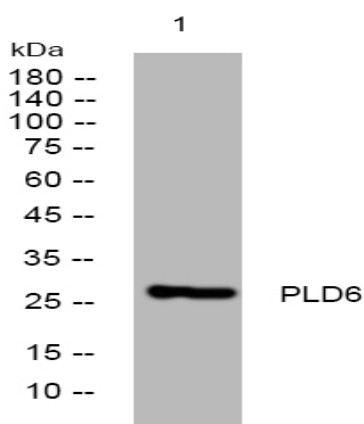
**Molecularweight :** 28kD

**Function :** catalytic activity:A phosphatidylcholine + H<sub>2</sub>O = choline + a phosphatidate.,similarity:Belongs to the phospholipase D family.,similarity:Contains 1 PLD phosphodiesterase domain.,

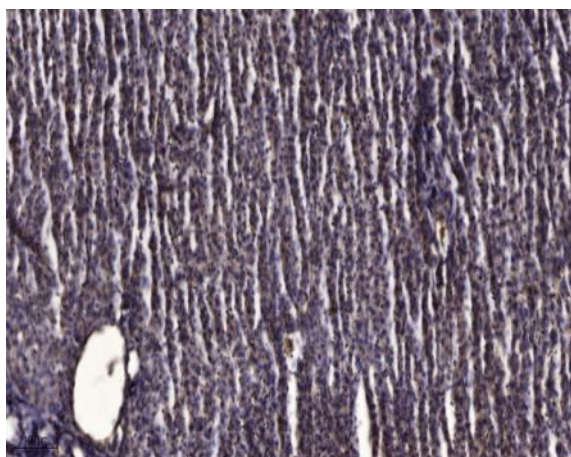
**Subcellular Location :** Mitochondrion outer membrane ; Single-pass membrane protein . Golgi apparatus . Localization in the mitochondrial outer membrane is found in different cell types where phospholipase is the predominant activity, however, in pachytene spermatocytes and spermatids of mouse testes where nuclease activity is predominant, localization is restricted to the Golgi, suggesting this enzyme is localized in different subcellular compartments depending on the role (phospholipase or nuclease) it needs to play in each cell type and developmental stage. .

**Expression :** Predominantly expressed in testis and ovary, but not limited to gonads (at protein level) (PubMed:17028579, PubMed:21397847). It is also found in brain, heart, pituitary gland, prostate, pancreas, thyroid, bone marrow, lung and muscle (PubMed:21397847).

## Products Images



Western blot analysis of lysates from A549 cells, primary antibody was diluted at 1:1000, 4° over night



Immunohistochemical analysis of paraffin-embedded human liver cancer. 1, Antibody was diluted at 1:200(4° overnight). 2, Tris-EDTA,pH9.0 was used for antigen retrieval. 3,Secondary antibody was diluted at 1:200(room temperature, 45min).