

## HECD2 rabbit pAb

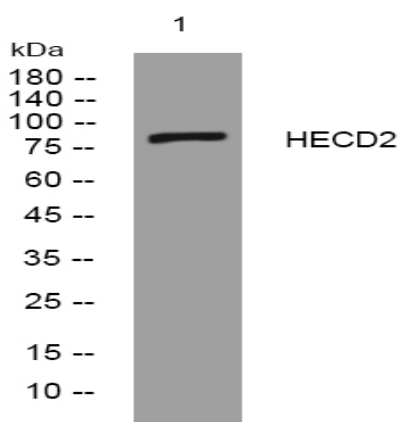
<b>Catalog No :</b>	YT6789
<b>Reactivity :</b>	Human;Mouse
<b>Applications :</b>	WB
<b>Target :</b>	HECD2
<b>Gene Name :</b>	HECTD2
<b>Protein Name :</b>	HECD2
<b>Human Gene Id :</b>	143279
<b>Human Swiss Prot No :</b>	Q5U5R9
<b>Mouse Gene Id :</b>	226098
<b>Mouse Swiss Prot No :</b>	Q8CDU6
<b>Immunogen :</b>	Synthesized peptide derived from human HECD2 AA range: 505-555
<b>Specificity :</b>	This antibody detects endogenous levels of HECD2 at Human/Mouse
<b>Formulation :</b>	Liquid in PBS containing 50% glycerol, 0.5% BSA and 0.02% sodium azide.
<b>Source :</b>	Polyclonal, Rabbit,IgG
<b>Dilution :</b>	WB 1[?]500-2000
<b>Purification :</b>	The antibody was affinity-purified from rabbit antiserum by affinity-chromatography using epitope-specific immunogen.
<b>Concentration :</b>	1 mg/ml
<b>Storage Stability :</b>	-15°C to -25°C/1 year(Do not lower than -25°C)

**Molecularweight :** 85kD

**Function :** function:Probable E3 ubiquitin-protein ligase which accepts ubiquitin from an E2 ubiquitin-conjugating enzyme in the form of a thioester and then directly transfers the ubiquitin to targeted substrates.,pathway:Protein modification; protein ubiquitination.,similarity:Contains 1 HECT (E6AP-type E3 ubiquitin-protein ligase) domain.,

**Subcellular Location :** nucleus,cytoplasm,cytosol,

## Products Images



Western blot analysis of lysates from HpeG2 cells, primary antibody was diluted at 1:1000, 4° over night