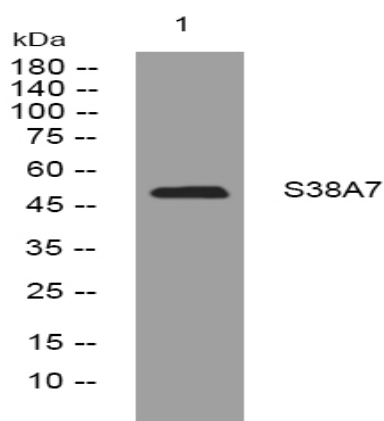


S38A7 rabbit pAb

Catalog No :	YT6787
Reactivity :	Human;Mouse;Rat
Applications :	WB
Target :	S38A7
Gene Name :	SLC38A7 SNAT7
Protein Name :	S38A7
Human Gene Id :	55238
Human Swiss Prot No :	Q9NVC3
Mouse Gene Id :	234595
Mouse Swiss Prot No :	Q8BWH0
Rat Gene Id :	291840
Rat Swiss Prot No :	Q6JWR2
Immunogen :	Synthesized peptide derived from human S38A7 AA range: 209-259
Specificity :	This antibody detects endogenous levels of S38A7 at Human/Mouse/Rat
Formulation :	Liquid in PBS containing 50% glycerol, 0.5% BSA and 0.02% sodium azide.
Source :	Polyclonal, Rabbit,IgG
Dilution :	WB 1:500-2000
Purification :	The antibody was affinity-purified from rabbit antiserum by affinity-chromatography using epitope-specific immunogen.

Concentration :	<u>1 mg/ml</u>
Storage Stability :	<u>-15°C to -25°C/1 year(Do not lower than -25°C)</u>
Molecularweight :	<u>51kD</u>
Function :	<u>function:Putative sodium-dependent amino acid/proton antiporter.,similarity:Belongs to the amino acid/polyamine transporter 2 family.,</u>
Subcellular Location :	<u>Membrane ; Multi-pass membrane protein . In neurons, located in soma and axons. .</u>

Products Images



Western blot analysis of lysates from CACO2 cells, primary antibody was diluted at 1:1000, 4° over night