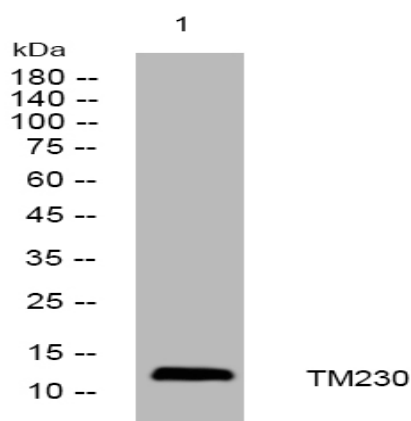


TM230 rabbit pAb

Catalog No :	YT6785
Reactivity :	Human;Mouse;Rat
Applications :	WB
Target :	TM230
Gene Name :	TMEM230 C20orf30 HSPC274 UNQ2432/PRO4992
Protein Name :	TM230
Human Gene Id :	29058
Human Swiss Prot No :	Q96A57
Mouse Gene Id :	70612
Mouse Swiss Prot No :	Q8CIB6
Rat Gene Id :	681315
Rat Swiss Prot No :	Q5BJP5
Immunogen :	Synthesized peptide derived from human TM230 AA range: 32-82
Specificity :	This antibody detects endogenous levels of TM230 at Human/Mouse/Rat
Formulation :	Liquid in PBS containing 50% glycerol, 0.5% BSA and 0.02% sodium azide.
Source :	Polyclonal, Rabbit,IgG
Dilution :	WB 1:500-2000
Purification :	The antibody was affinity-purified from rabbit antiserum by affinity-chromatography using epitope-specific immunogen.

Concentration :	<u>1 mg/ml</u>
Storage Stability :	<u>-15°C to -25°C/1 year(Do not lower than -25°C)</u>
Molecularweight :	<u>13kD</u>
Function :	<u>similarity:Belongs to the UPF0414 family.,</u>
Subcellular Location :	<u>Membrane ; Multi-pass membrane protein . Golgi apparatus, trans-Golgi network . Cytoplasmic vesicle, secretory vesicle, synaptic vesicle . Early endosome . Recycling endosome . Late endosome . Cytoplasmic vesicle, autophagosome .</u>

Products Images



Western blot analysis of lysates from 293T cells, primary antibody was diluted at 1:1000, 4° over night