

**NCK5L rabbit pAb**

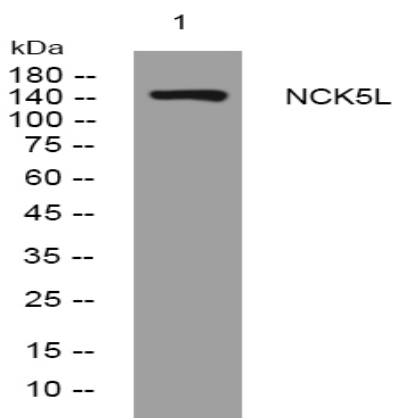
<b>Catalog No :</b>	YT6781
<b>Reactivity :</b>	Human;Mouse
<b>Applications :</b>	WB
<b>Target :</b>	NCK5L
<b>Gene Name :</b>	NCKAP5L KIAA1602 FP1193
<b>Protein Name :</b>	NCK5L
<b>Human Gene Id :</b>	57701
<b>Human Swiss Prot No :</b>	Q9HCH0
<b>Mouse Gene Id :</b>	380969
<b>Mouse Swiss Prot No :</b>	Q6GQX2
<b>Immunogen :</b>	Synthesized peptide derived from human NCK5L AA range: 261-311
<b>Specificity :</b>	This antibody detects endogenous levels of NCK5L at Human/Mouse
<b>Formulation :</b>	Liquid in PBS containing 50% glycerol, 0.5% BSA and 0.02% sodium azide.
<b>Source :</b>	Polyclonal, Rabbit,IgG
<b>Dilution :</b>	WB 1:500-2000
<b>Purification :</b>	The antibody was affinity-purified from rabbit antiserum by affinity-chromatography using epitope-specific immunogen.
<b>Concentration :</b>	1 mg/ml
<b>Storage Stability :</b>	-15°C to -25°C/1 year(Do not lower than -25°C)

**Molecularweight :** 146kD

**Subcellular Location :**

Cytoplasm, cytoskeleton, microtubule organizing center, centrosome . Localizes to microtubule plus ends (PubMed:26485573, PubMed:26482847). Associates with centrosomes during interphase, but dissociates from these structures from the onset of mitosis (PubMed:26549230) .

## Products Images



Western blot analysis of lysates from MCF-7 cells, primary antibody was diluted at 1:1000, 4° over night