

**KCTD3 rabbit pAb**

<b>Catalog No :</b>	YT6780
<b>Reactivity :</b>	Human;Mouse
<b>Applications :</b>	WB;IHC
<b>Target :</b>	KCTD3
<b>Gene Name :</b>	KCTD3
<b>Protein Name :</b>	KCTD3
<b>Human Gene Id :</b>	51133
<b>Human Swiss Prot No :</b>	Q9Y597
<b>Mouse Gene Id :</b>	226823
<b>Mouse Swiss Prot No :</b>	Q8BFX3
<b>Immunogen :</b>	Synthesized peptide derived from human KCTD3 AA range: 360-410
<b>Specificity :</b>	This antibody detects endogenous levels of KCTD3 at Human/Mouse
<b>Formulation :</b>	Liquid in PBS containing 50% glycerol, 0.5% BSA and 0.02% sodium azide.
<b>Source :</b>	Polyclonal, Rabbit,IgG
<b>Dilution :</b>	WB 1:500-2000;IHC 1:50-300
<b>Purification :</b>	The antibody was affinity-purified from rabbit antiserum by affinity-chromatography using epitope-specific immunogen.
<b>Concentration :</b>	1 mg/ml
<b>Storage Stability :</b>	-15°C to -25°C/1 year(Do not lower than -25°C)

**Molecularweight :** 90kD

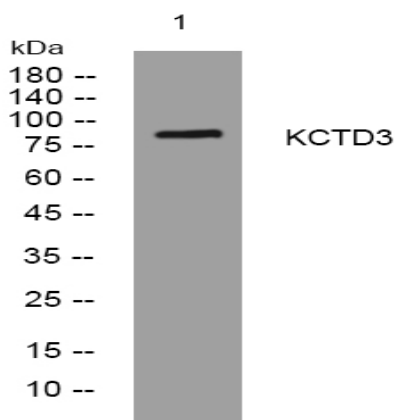
**Background :** This gene encodes a member of the potassium channel tetramerization-domain containing (KCTD) protein family. Members of this protein family regulate the biophysical characteristics of ion channels. In mouse, this protein interacts with hyperpolarization-activated cyclic nucleotide-gated channel complex 3 and enhances its cell surface expression and current density. Alternative splicing results in multiple transcript variants. [provided by RefSeq, Feb 2016],

**Function :** miscellaneous:Reacts with sera from 5-25 per cent of cancer patients but not with sera from normal donors. Seventy per cent of renal cancer patients have antibodies against one or a panel of these antigens.,sequence caution:Contaminating sequence. Potential poly-A sequence.,similarity:Belongs to the KCTD3 family.,similarity:Contains 1 BTB (POZ) domain.,similarity:Contains 5 WD repeats.,tissue specificity:Broadly expressed in normal tissues.,

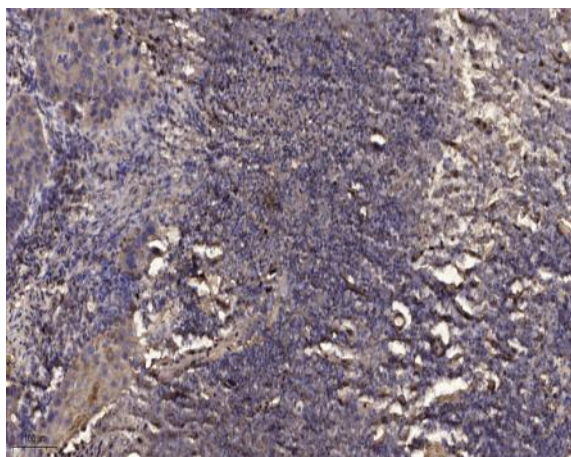
**Subcellular Location :** Cell membrane .

**Expression :** Broadly expressed in normal tissues.

## Products Images



Western blot analysis of lysates from KB cells, primary antibody was diluted at 1:1000, 4° over night



Immunohistochemical analysis of paraffin-embedded human Squamous cell carcinoma of lung. 1, Antibody was diluted at 1:200(4° overnight). 2, Tris-EDTA,pH9.0 was used for antigen retrieval. 3,Secondary antibody was diluted at 1:200(room temperature, 45min).