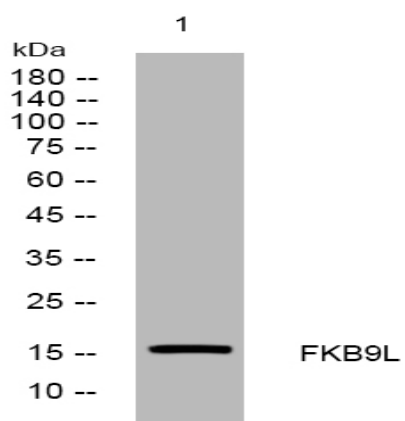


FKB9L rabbit pAb

Catalog No :	YT6777
Reactivity :	Human
Applications :	WB
Target :	FKB9L
Gene Name :	FKBP9L
Protein Name :	FKB9L
Human Swiss Prot No :	Q75LS8
Immunogen :	Synthesized peptide derived from human FKB9L AA range: 40-90
Specificity :	This antibody detects endogenous levels of FKB9L at Human
Formulation :	Liquid in PBS containing 50% glycerol, 0.5% BSA and 0.02% sodium azide.
Source :	Polyclonal, Rabbit,IgG
Dilution :	WB 1:500-2000
Purification :	The antibody was affinity-purified from rabbit antiserum by affinity-chromatography using epitope-specific immunogen.
Concentration :	1 mg/ml
Storage Stability :	-15°C to -25°C/1 year(Do not lower than -25°C)
Molecularweight :	16kD
Subcellular Location :	endoplasmic reticulum membrane,

Products Images



Western blot analysis of lysates from U2OS cells, primary antibody was diluted at 1:1000, 4° over night