

PATE4 rabbit pAb

Catalog No :	YT6776
Reactivity :	Human;Mouse
Applications :	IHC;IF
Target :	PATE4
Fields :	>>Neuroactive ligand-receptor interaction
Gene Name :	PATE4
Protein Name :	PATE4
Human Gene Id :	399968
Human Swiss Prot No :	P0C8F1
Mouse Gene Id :	56872
Mouse Swiss Prot No :	Q09098
Immunogen :	Synthesized peptide derived from human PATE4 AA range: 30-80
Specificity :	This antibody detects endogenous levels of PATE4 at Human/Mouse
Formulation :	Liquid in PBS containing 50% glycerol, 0.5% BSA and 0.02% sodium azide.
Source :	Polyclonal, Rabbit,IgG
Dilution :	IHC 1[?]50-200. IF 1:50-200
Purification :	The antibody was affinity-purified from rabbit antiserum by affinity-chromatography using epitope-specific immunogen.
Concentration :	1 mg/ml

Storage Stability : -15°C to -25°C/1 year(Do not lower than -25°C)

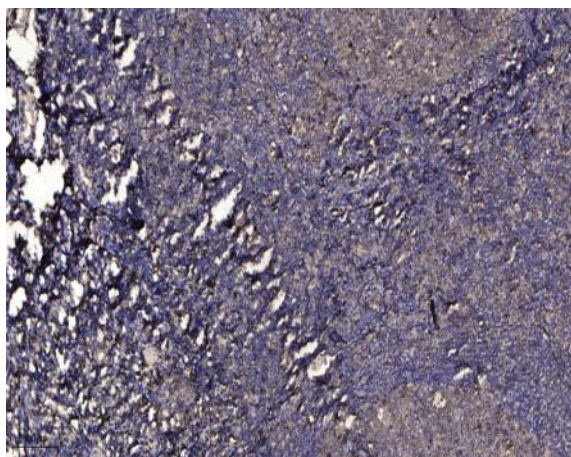
Molecularweight : 11kD

Function : function:May modulate the function of nicotinic acetylcholine receptors. May enhance sperm motility.,similarity:Belongs to the PATE family.,similarity:Contains 1 UPAR/Ly6 domain.,tissue specificity:Specifically expressed in prostate, testis and spinal cord. Present in the acrosomal region of sperm cells. Present in apical epithelial cells of prostatic duct.,

Subcellular Location : Secreted . Cytoplasmic vesicle, secretory vesicle, acrosome .

Expression : Specifically expressed in prostate, testis and spinal cord. Present in the acrosomal region of sperm cells. Present in apical epithelial cells of prostatic duct.

Products Images



Immunohistochemical analysis of paraffin-embedded human tonsil. 1, Antibody was diluted at 1:200(4° overnight). 2, Tris-EDTA,pH9.0 was used for antigen retrieval. 3,Secondary antibody was diluted at 1:200(room temperature, 30min).