

MANEL rabbit pAb

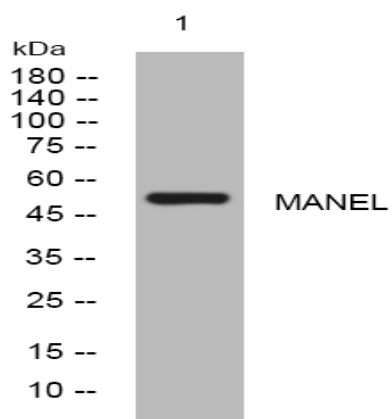
Catalog No :	YT6774
Reactivity :	Human;Mouse
Applications :	WB
Target :	MANEL
Gene Name :	MANEAL
Protein Name :	MANEL
Human Gene Id :	149175
Human Swiss Prot No :	Q5VSG8
Mouse Gene Id :	215090
Mouse Swiss Prot No :	Q6P1J0
Immunogen :	Synthesized peptide derived from human MANEL AA range: 218-268
Specificity :	This antibody detects endogenous levels of MANEL at Human/Mouse
Formulation :	Liquid in PBS containing 50% glycerol, 0.5% BSA and 0.02% sodium azide.
Source :	Polyclonal, Rabbit,IgG
Dilution :	WB 1:500-2000
Purification :	The antibody was affinity-purified from rabbit antiserum by affinity-chromatography using epitope-specific immunogen.
Concentration :	1 mg/ml
Storage Stability :	-15°C to -25°C/1 year(Do not lower than -25°C)

Molecularweight : 50kD

Function : similarity:Belongs to the glycosyl hydrolase 99 family.,

Subcellular Location : Golgi apparatus membrane ; Single-pass type II membrane protein .

Products Images



Western blot analysis of lysates from MDA-MB cells, primary antibody was diluted at 1:1000, 4° over night