

SO6A1 rabbit pAb

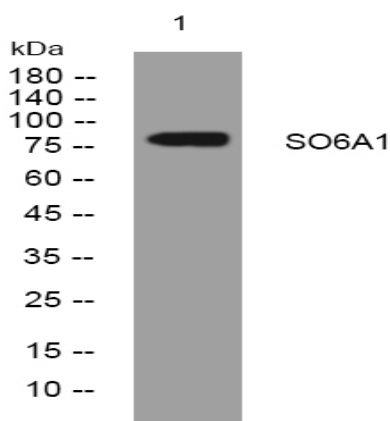
Catalog No :	YT6770
Reactivity :	Human
Applications :	WB;IHC
Target :	SO6A1
Gene Name :	SLCO6A1 OATP6A1 SLC21A19
Protein Name :	SO6A1
Human Gene Id :	133482
Human Swiss Prot No :	Q86UG4
Immunogen :	Synthesized peptide derived from human SO6A1 AA range: 213-263
Specificity :	This antibody detects endogenous levels of SO6A1 at Human
Formulation :	Liquid in PBS containing 50% glycerol, 0.5% BSA and 0.02% sodium azide.
Source :	Polyclonal, Rabbit,IgG
Dilution :	WB 1:500-2000;IHC 1:50-300
Purification :	The antibody was affinity-purified from rabbit antiserum by affinity-chromatography using epitope-specific immunogen.
Concentration :	1 mg/ml
Storage Stability :	-15 °C to -25 °C/1 year(Do not lower than -25 °C)
Molecularweight :	79kD
Function :	similarity:Belongs to the organo anion transporter (TC 2.A.60) family.,tissue specificity:Strongly expressed in testis. Weakly expressed in spleen, brain, fetal brain and placenta. Detected in lung tumors.,

Subcellular Location :

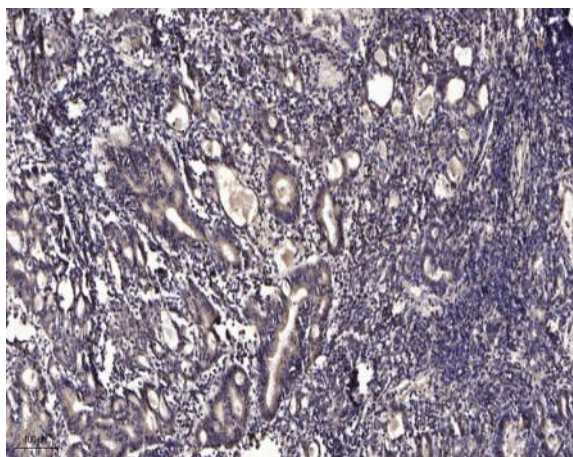
Cell membrane; Multi-pass membrane protein.

Expression :

Strongly expressed in testis. Weakly expressed in spleen, brain, fetal brain and placenta. Detected in lung tumors.

Products Images

Western blot analysis of lysates from 293T cells, primary antibody was diluted at 1:1000, 4° over night



Immunohistochemical analysis of paraffin-embedded human Gastric adenocarcinoma. 1, Antibody was diluted at 1:200(4° overnight). 2, Tris-EDTA,pH9.0 was used for antigen retrieval. 3,Secondary antibody was diluted at 1:200(room temperature, 45min).