

MEX3D rabbit pAb

Catalog No :	YT6764
Reactivity :	Human;Mouse
Applications :	WB;IHC
Target :	MEX3D
Gene Name :	MEX3D KIAA2031 RKHD1 RNF193
Protein Name :	MEX3D
Human Gene Id :	399664
Human Swiss Prot No :	Q86XN8
Mouse Gene Id :	237400
Mouse Swiss Prot No :	Q3UE17
Immunogen :	Synthesized peptide derived from human MEX3D AA range: 121-171
Specificity :	This antibody detects endogenous levels of MEX3D at Human/Mouse
Formulation :	Liquid in PBS containing 50% glycerol, 0.5% BSA and 0.02% sodium azide.
Source :	Polyclonal, Rabbit,IgG
Dilution :	WB 1:500-2000;IHC 1:50-300
Purification :	The antibody was affinity-purified from rabbit antiserum by affinity-chromatography using epitope-specific immunogen.
Concentration :	1 mg/ml
Storage Stability :	-15°C to -25°C/1 year(Do not lower than -25°C)

Molecularweight : 72kD**Function :**

domain: Binds RNA through its KH domains., function: RNA binding protein, may be involved in post-transcriptional regulatory mechanisms., PTM: Phosphorylated., similarity: Contains 1 KH domain., similarity: Contains 1 RING-type zinc finger., similarity: Contains 2 KH domains., subcellular location: Predominantly expressed in the cytoplasm and shuttles between the cytoplasm and the nucleus through the CRM1 export pathway., tissue specificity: Ubiquitously expressed in all the cell lines and tissues tested.,

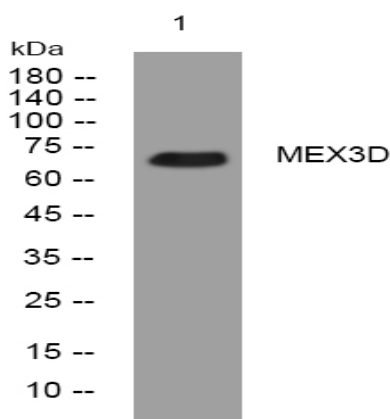
Subcellular Location :

Cytoplasm . Nucleus . Predominantly expressed in the cytoplasm and shuttles between the cytoplasm and the nucleus through the CRM1 export pathway. .

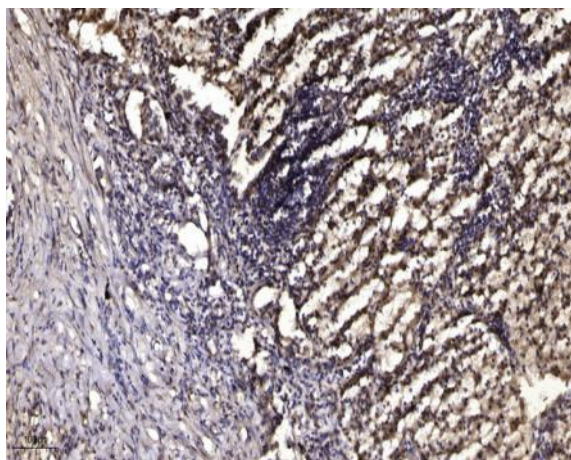
Expression :

Ubiquitously expressed in all the cell lines and tissues tested.

Products Images



Western blot analysis of lysates from 3T3 cells, primary antibody was diluted at 1:1000, 4° over night



Immunohistochemical analysis of paraffin-embedded human Squamous cell carcinoma of lung. 1, Antibody was diluted at 1:200(4° overnight). 2, Tris-EDTA, pH9.0 was used for antigen retrieval. 3, Secondary antibody was diluted at 1:200(room temperature, 45min).