

ITIH6 rabbit pAb

Catalog No :	YT6763
Reactivity :	Human
Applications :	WB;ELISA;IHC
Target :	ITIH6
Gene Name :	ITIH6 ITIH5L UNQ6369/PRO21074
Protein Name :	ITIH6
Human Gene Id :	347365
Human Swiss Prot No :	Q6UXX5
Immunogen :	Synthesized peptide derived from human ITIH6 AA range: 152-202
Specificity :	This antibody detects endogenous levels of ITIH6 at Human
Formulation :	Liquid in PBS containing 50% glycerol, 0.5% BSA and 0.02% sodium azide.
Source :	Polyclonal, Rabbit,IgG
Dilution :	WB 1:500-2000;IHC 1:50-300; ELISA 2000-20000
Purification :	The antibody was affinity-purified from rabbit antiserum by affinity-chromatography using epitope-specific immunogen.
Concentration :	1 mg/ml
Storage Stability :	-15°C to -25°C/1 year(Do not lower than -25°C)
Molecularweight :	144kD
Background :	The protein encoded by this gene belongs to the interalpha trypsin inhibitor heavy chain (ITIH) family. Interalpha trypsin inhibitor (ITI) is composed of two heavy chains (containing VWA domain) and one light chain. The light chain

confers the protease-inhibitor function, while the heavy chains are involved in mediating protein-protein interactions with the components of the extracellular matrix. [provided by RefSeq, Sep 2009],

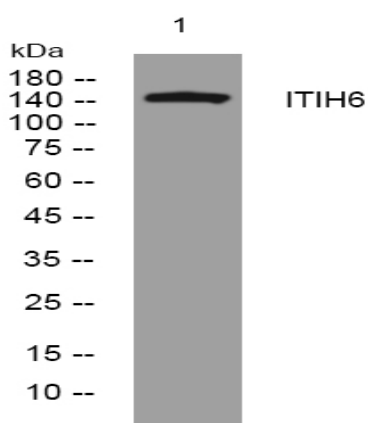
Function :

similarity:Belongs to the ITIH family.,similarity:Contains 1 VWFA domain.,

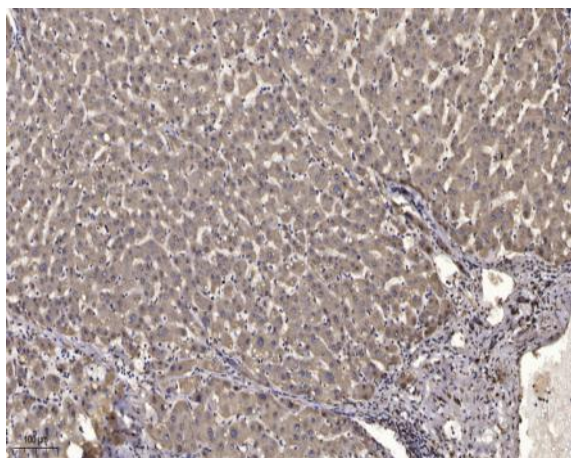
Subcellular Location :

Secreted .

Products Images



Western blot analysis of lysates from U2OS cells, primary antibody was diluted at 1:1000, 4° over night



Immunohistochemical analysis of paraffin-embedded human liver cancer. 1, Antibody was diluted at 1:200(4° overnight). 2, Tris-EDTA,pH9.0 was used for antigen retrieval. 3,Secondary antibody was diluted at 1:200(room temperature, 45min).