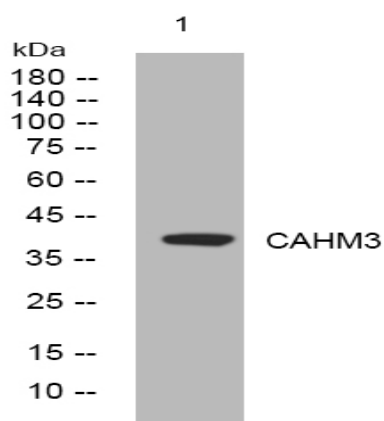


CAHM3 rabbit pAb

Catalog No :	YT6762
Reactivity :	Human;Mouse
Applications :	WB
Target :	CAHM3
Gene Name :	CALHM3 FAM26A
Protein Name :	CAHM3
Human Gene Id :	119395
Human Swiss Prot No :	Q86XJ0
Immunogen :	Synthesized peptide derived from human CAHM3 AA range: 191-241
Specificity :	This antibody detects endogenous levels of CAHM3 at Human
Formulation :	Liquid in PBS containing 50% glycerol, 0.5% BSA and 0.02% sodium azide.
Source :	Polyclonal, Rabbit,IgG
Dilution :	WB 1[?]500-2000
Purification :	The antibody was affinity-purified from rabbit antiserum by affinity-chromatography using epitope-specific immunogen.
Concentration :	1 mg/ml
Storage Stability :	-15°C to -25°C/1 year(Do not lower than -25°C)
Molecularweight :	39kD
Function :	similarity:Belongs to the FAM26 family.,

SubcellularBasolateral cell membrane ; Multi-pass membrane protein .**Location :****Expression :**Specifically expressed in circumvallate taste bud cells.

Products Images



Western blot analysis of lysates from HCT116 cells, primary antibody was diluted at 1:1000, 4° over night