

RITA rabbit pAb

Catalog No :	YT6757
Reactivity :	Human;Mouse;Rat
Applications :	WB;IHC
Target :	RITA
Gene Name :	RITA C12orf52 PSEC0043
Protein Name :	RITA
Human Gene Id :	84934
Human Swiss Prot No :	Q96K30
Mouse Gene Id :	100764
Mouse Swiss Prot No :	Q9D1H0
Rat Gene Id :	288683
Rat Swiss Prot No :	Q2KJ10
Immunogen :	Synthesized peptide derived from human RITA AA range: 213-263
Specificity :	This antibody detects endogenous levels of RITA at Human/Mouse/Rat
Formulation :	Liquid in PBS containing 50% glycerol, 0.5% BSA and 0.02% sodium azide.
Source :	Polyclonal, Rabbit,IgG
Dilution :	WB 1:500-2000;IHC 1:50-300
Purification :	The antibody was affinity-purified from rabbit antiserum by affinity-chromatography using epitope-specific immunogen.

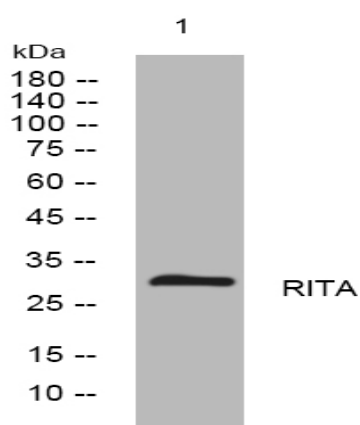
Concentration : 1 mg/ml

Storage Stability : -15°C to -25°C/1 year(Do not lower than -25°C)

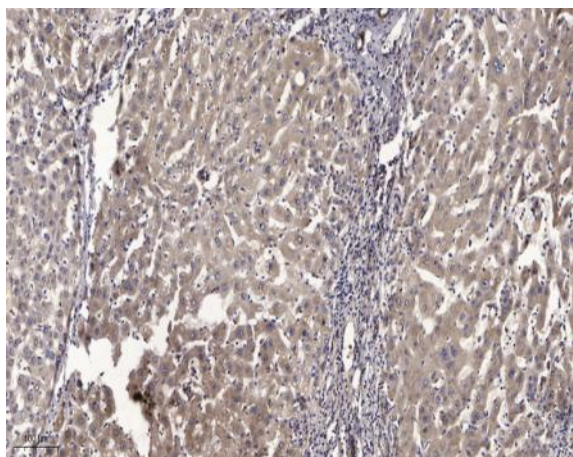
Molecularweight : 30kD

Subcellular Location : Cytoplasm . Nucleus . Cytoplasm, cytoskeleton, microtubule organizing center, centrosome . Shuttles rapidly between the cytoplasm and the nucleus. The function of centrosome localization is still unclear.

Products Images



Western blot analysis of lysates from 293T cells, primary antibody was diluted at 1:1000, 4° over night



Immunohistochemical analysis of paraffin-embedded human liver cancer. 1, Antibody was diluted at 1:200(4° overnight). 2, Tris-EDTA,pH9.0 was used for antigen retrieval. 3,Secondary antibody was diluted at 1:200(room temperature, 45min).